



THE WEEKLY COUNCIL INFORMATION REPORT

September 17, 2021

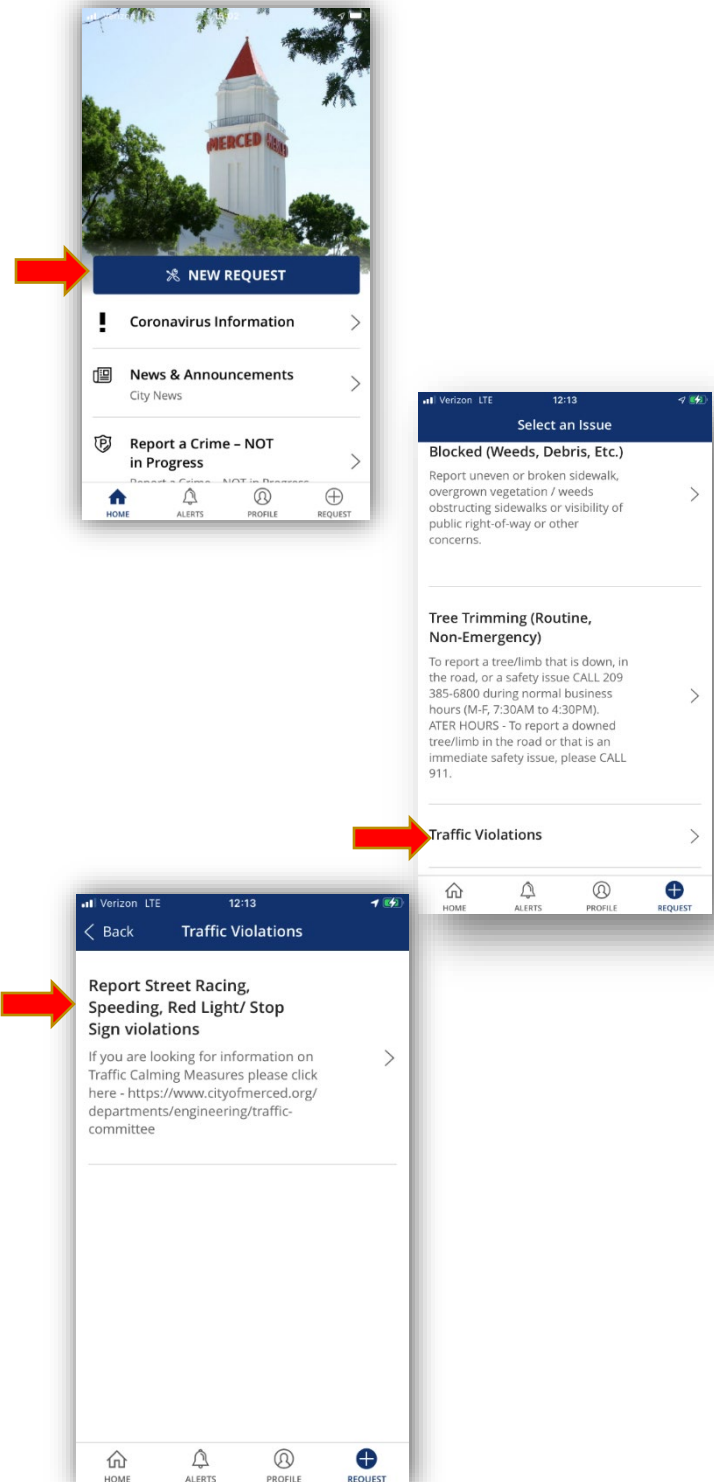
STAY INFORMED USE MERCED CONNECT

Have you discovered the Merced Connect app? Merced Connect enables users to access City of Merced government services in a single location. Users can submit, track, and view service requests through the app on their smartphones and online. For the latest news and announcements, to learn more about water conservation or to report traffic issues, use the Merced Connect app. Submissions will be routed to the correct department for handling and resolution. Users will receive a notification when requests have been resolved. Additionally, users can report the following.

- Code Enforcement Issues
- Abandoned Vehicles
- Transient Encampments
- Illegal Dumping/Alley Clean Up
- Dead Animals
- Abandoned Shopping Cards
- **NEW- Traffic Issues**
 - Street racing
 - Consistent speeding
 - Ongoing red-light running
 - Constant stop sign running

Merced Connect is available on Google Play™ and the Apple App Store.

Download the app today, stay informed and keep the City of Merced informed.



REDISTRICTING PROJECT

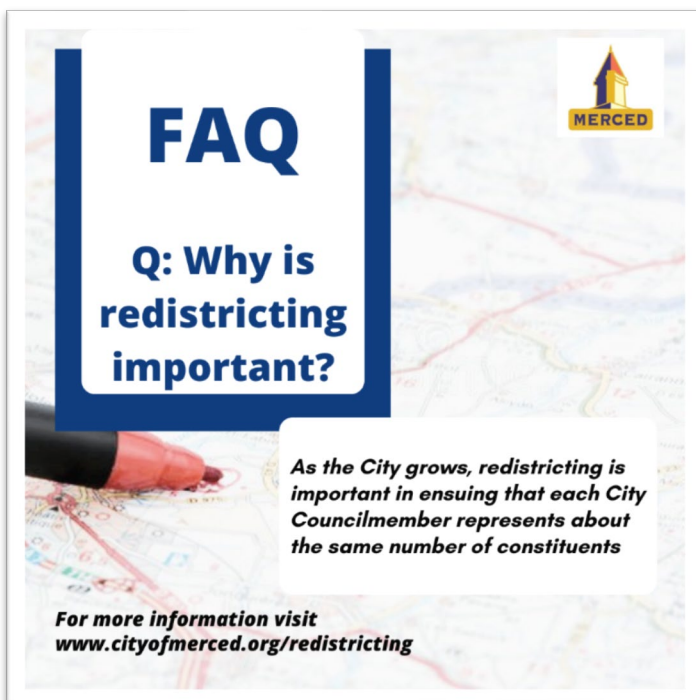


Every ten years, local governments use new census data to redraw their district lines to reflect how local populations have changed. Assembly Bill 849 (2019) requires cities and counties to engage communities in the redistricting process by holding public hearings and/or workshops and doing public outreach, including to non-English-speaking communities.

Districts must be redrawn so that each district is substantially equal in population. This process, called redistricting, is important in ensuring that each city councilmember represents about the same number of constituents. In Merced, the City Council is responsible for adopting council districts.

Redistricting is done using U.S. Census data, which is expected to be released in late September of 2021. For the City of Merced, the redistricting process must be completed by April 17, 2022.

Redistricting determines which neighborhoods and communities are grouped together into a district for purposes of electing a councilmember. The City Council has decided to move forward in forming a Redistricting Advisory Committee, which is made up of members of the public, to provide input in selecting the next district map for our council districts. You have an opportunity to share how you think district boundaries should be drawn to best represent your community.



Highway 99 On-Ramp at G and 13th/14th Street

In progress photos from the large-scale encampment clean-up performed by CalTrans on property adjacent to the Highway 99 on-ramp on G Street between 13th/14th Streets.



Celebrating A Piece of History

This month we celebrate the 102nd anniversary of our American LaFrance 750 gallons per minute combination pumping engine. In 1919, the city purchased the machine and one 14-4 service truck for \$11,500 from American-La France in Elmira, NY. The 102-year-old 1919 engine is in running order and used for special events. It is meticulously cared for by Fire Station 53 personnel.



The Windy Fire

On Sept. 14, Merced, Porterville, and Hanford Fire Departments, along with Orange Cove Fire Protection and North Central Fire Protection Districts, deployed to the Windy Complex fire in southeastern Tulare County. On Sept. 17, several crews at the Windy Complex Fire were sent to Johnsondale, also located in Tulare County, to scout for upcoming assignments due to the fire's shift toward the general area. Crews were greeted by Type 1 helicopters using the local lake as a dip site.



Public Works in Action

Tree Division crews removed dead trees and stumps in Applegate Park, as well as performed trimming along 10th Street.



Public Works Parks, with assistance from the Water Department, repaired an irrigation water leak at Cardella Road.



Sewer crews training at a sewer lift station



Water crews performed scheduled and emergency water main repairs on Wood Street and East 22nd Street. Crews also performed repairs on Corona Court, tied in new water mains in the Cypress Terrace area, and abandoned a portion of the water main along East South Bear Creek.

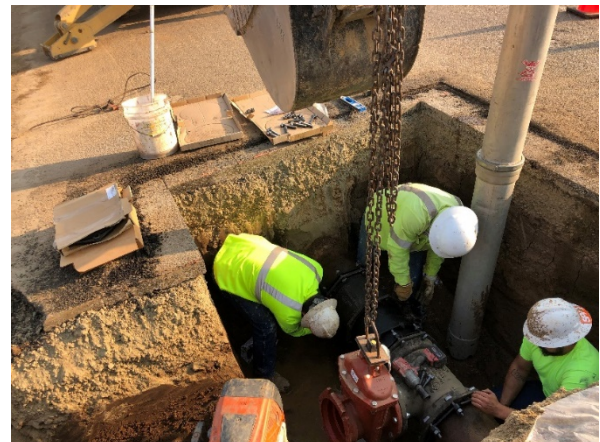
Wood Street



East 22nd Street



Cypress Terrace



ES Bear Creek



The V Street project is ahead of schedule.

Most of the sidewalk demolition, ADA Ramps, driveways, curbs, and gutters have been completed. The pouring of concrete will begin in the coming week. In addition, the engineering department has placed additional signage and message boards to notify the public that all businesses are open and accessible.



N Street Project nears completion.

In the coming week, the contractor will place asphalt concrete. Due to curing times, striping will follow approximately ten days after. Light poles are on order and will be installed when they arrive.



NATIONAL COFFEE WITH A COP DAY

Join Merced City Police on **Wednesday, Oct. 6th, from 8 to 10 am**, at the Native Sun, located at the El Capitan Hotel, to celebrate National Coffee with a Cop Day!

National Coffee with a Cop Day brings men and women in uniform together with their communities to connect over a cup of joe.

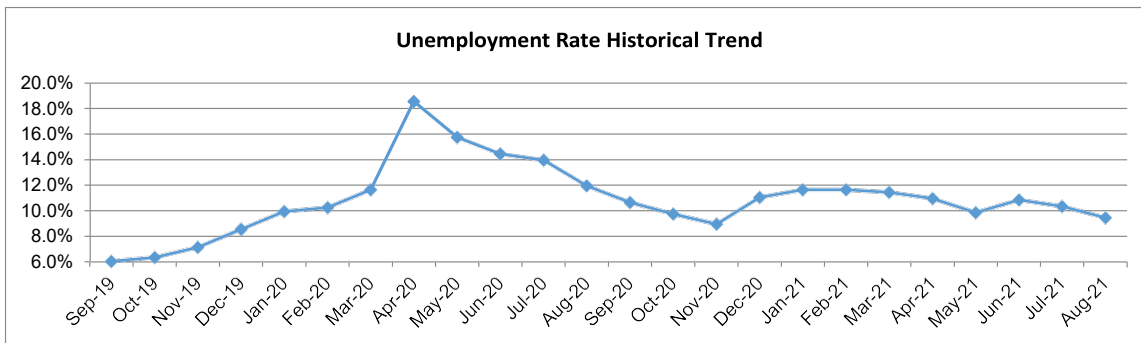
Community members are invited to join police at this informal event to ask questions, voice concerns, get to know their neighbors, and interact with Merced Police Officers.



Native Sun



MERCED COUNTY LABOR MARKET REPORT FOR AUGUST 2021



The unemployment rate in the Merced County was 9.4 percent in August 2021, down from a revised 10.3 percent in July 2021, and below the year-ago estimate of 11.9 percent. This compares with an unadjusted unemployment rate of 7.5 percent for California and 5.3 percent for the nation during the same period. Please refer to the attached LMI report for additional information.

Inspection Services CI

For the period of August 23rd, 2021, through September 5th, 2021, there were 18 New Single-Family Dwelling Permits Issued.

The running total of New Single-Family Dwellings in Plan Review is **193**.

Multi-Family Permits in review:

Gateway Terrace Apartments located at 405 W 12th St; 1 office/lounge and 6, 2 story apartments: 2 buildings have 16 units, 3 buildings have 30 units, and 1 building has 4 units for a total of 126 units. Compass Pointe phase II: 128 units in 16, 8-plex buildings, plus a clubhouse.

There is a fire damage repair that is also adding an ADU located at 1740 Shirley St. There were 0 multi-family permits issued during this period. (No change from the last report)

There were 2 new construction commercial permits issued during this period; one for a warehouse for PG&E located at 4291 E. Childs Ave., and one for a shell/tenant improvement combo for a 22,136 SF Tractor Supply located at 882 S Coffee St.

There was 1 additional tenant improvement permit issued during this period; for a 1,310 SF Verizon store located at 145 E. Yosemite Ave, Ste B.

There was 1 new commercial submittal during this period for an 8,400 SF shell building for future retail located at 125 E. Yosemite Ave.

There were 2 new tenant improvement submittals during this period; one for an Aegis Treatment Center located at 1343 W. Main St. and one for a 2,865 SF renovation, occupancy change, and site improvements at the transit building at 357 W 18th St.

There were 2 Certificate of Occupancy (CofOs) issued for this period; one for the Tioga Apartments located at 1715 N St. and one for the T-Mobile store located at 1372 W. Olive Ave.

There were 47 CofOs for Single Family Dwellings during this period.

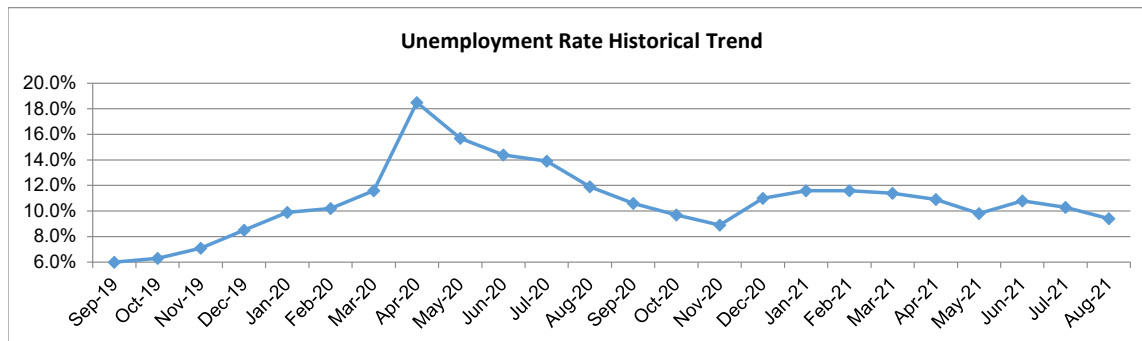
SEPT. 22 PLANNING COMMISSION MEETING CANCELLED – NO REPORT

ATTACHMENTS

1. August 2021 Labor Market Report – Pages 10-12
2. UC Merced Foundation State of the University Invitation – Page 13

IMMEDIATE RELEASE
 MERCED METROPOLITAN STATISTICAL AREA (MSA)
 (Merced County)

The unemployment rate in the Merced County was 9.4 percent in August 2021, down from a revised 10.3 percent in July 2021, and below the year-ago estimate of 11.9 percent. This compares with an unadjusted unemployment rate of 7.5 percent for California and 5.3 percent for the nation during the same period.



Industry	Jul-2021	Aug-2021	Change		Aug-2020	Aug-2021	Change
	Revised	Prelim				Prelim	
Total, All Industries	83,800	87,500	3,700		80,600	87,500	6,900
Total Farm	15,800	15,900	100		15,200	15,900	700
Total Nonfarm	68,000	71,600	3,600		65,400	71,600	6,200
Mining, Logging, and Construction	2,800	2,900	100		2,600	2,900	300
Manufacturing	11,200	11,400	200		10,800	11,400	600
Trade, Transportation & Utilities	13,300	13,500	200		13,200	13,500	300
Information	200	200	0		200	200	0
Financial Activities	1,800	1,800	0		1,800	1,800	0
Professional & Business Services	3,800	3,600	(200)		3,600	3,600	0
Educational & Health Services	10,100	10,100	0		10,200	10,100	(100)
Leisure & Hospitality	6,200	6,500	300		4,900	6,500	1,600
Other Services	1,300	1,300	0		1,200	1,300	100
Government	17,300	20,300	3,000		16,900	20,300	3,400

Notes: Data not adjusted for seasonality. Data may not add due to rounding
 Labor force data are revised month to month
 Additional data are available on line at www.labormarketinfo.edd.ca.gov

Data Not Seasonally Adjusted

	Aug 20	Jun 21	Jul 21 Revised	Aug 21 Prelim	Percent Change	
					Month	Year
Civilian Labor Force (1)	112,500	116,400	117,200	119,700	2.1%	6.4%
Civilian Employment	99,200	103,900	105,200	108,500	3.1%	9.4%
Civilian Unemployment	13,300	12,600	12,000	11,200	-6.7%	-15.8%
Civilian Unemployment Rate	11.9%	10.8%	10.3%	9.4%		
(CA Unemployment Rate)	12.3%	8.0%	7.9%	7.5%		
(U.S. Unemployment Rate)	8.5%	6.1%	5.7%	5.3%		

Total, All Industries (2)	80,600	84,100	83,800	87,500	4.4%	8.6%
Total Farm	15,200	15,700	15,800	15,900	0.6%	4.6%
Total Nonfarm	65,400	68,400	68,000	71,600	5.3%	9.5%
Total Private	48,500	50,700	50,700	51,300	1.2%	5.8%
Goods Producing	13,400	14,000	14,000	14,300	2.1%	6.7%
Mining, Logging, and Construction	2,600	2,800	2,800	2,900	3.6%	11.5%
Manufacturing	10,800	11,200	11,200	11,400	1.8%	5.6%
Nondurable Goods	9,400	9,600	9,700	9,900	2.1%	5.3%
Service Providing	52,000	54,400	54,000	57,300	6.1%	10.2%
Private Service Providing	35,100	36,700	36,700	37,000	0.8%	5.4%
Trade, Transportation & Utilities	13,200	13,400	13,300	13,500	1.5%	2.3%
Wholesale Trade	1,200	1,200	1,200	1,200	0.0%	0.0%
Retail Trade	8,300	8,400	8,300	8,300	0.0%	0.0%
Transportation, Warehousing & Utilities	3,700	3,800	3,800	4,000	5.3%	8.1%
Information	200	200	200	200	0.0%	0.0%
Financial Activities	1,800	1,800	1,800	1,800	0.0%	0.0%
Professional & Business Services	3,600	3,800	3,800	3,600	-5.3%	0.0%
Educational & Health Services	10,200	10,100	10,100	10,100	0.0%	-1.0%
Leisure & Hospitality	4,900	6,100	6,200	6,500	4.8%	32.7%
Other Services	1,200	1,300	1,300	1,300	0.0%	8.3%
Government	16,900	17,700	17,300	20,300	17.3%	20.1%
Federal Government	1,100	800	800	800	0.0%	-27.3%
State & Local Government	15,800	16,900	16,500	19,500	18.2%	23.4%
State Government	3,300	3,000	3,100	3,400	9.7%	3.0%
State Government Education	2,700	2,400	2,500	2,800	12.0%	3.7%
State Government Excluding Education	600	600	600	600	0.0%	0.0%
Local Government	12,500	13,900	13,400	16,100	20.1%	28.8%
Local Government Excluding Education	3,900	4,100	4,000	3,900	-2.5%	0.0%
Special Districts plus Indian Tribes	600	600	600	600	0.0%	0.0%

Notes:

(1) Civilian labor force data are by place of residence; include self-employed individuals, unpaid family workers, household domestic workers, & workers on strike. Data may not add due to rounding. The unemployment rate is calculated using unrounded data.

(2) Industry employment is by place of work; excludes self-employed individuals, unpaid family workers, household domestic workers, & workers on strike. Data may not add due to rounding.

These data are produced by the Labor Market Information Division of the California Employment Development Department (EDD). Questions should be directed to: Steven Gutierrez 559-230-4102 or Frances Gines 951-955-3204

These data, as well as other labor market data, are available via the Internet at <http://www.labormarketinfo.edd.ca.gov>. If you need assistance, please call (916) 262-2162.

#####

REPORT 400 C
Monthly Labor Force Data for Counties
August 2021 - Preliminary
 Data Not Seasonally Adjusted

COUNTY	RANK BY RATE	LABOR FORCE	EMPLOYMENT	UNEMPLOYMENT	RATE
STATE TOTAL	---	19,024,400	17,600,200	1,424,300	7.5%
ALAMEDA	23	807,100	757,000	50,000	6.2%
ALPINE	51	480	440	40	8.9%
AMADOR	28	14,780	13,800	980	6.6%
BUTTE	32	93,100	86,800	6,300	6.8%
CALAVERAS	13	22,030	20,800	1,230	5.6%
COLUSA	53	11,400	10,340	1,060	9.3%
CONTRA COSTA	26	538,500	503,500	35,000	6.5%
DEL NORTE	38	9,760	9,070	690	7.1%
EL DORADO	13	91,300	86,200	5,100	5.6%
FRESNO	50	445,500	406,200	39,400	8.8%
GLENN	33	12,730	11,850	880	6.9%
HUMBOLDT	21	59,900	56,200	3,700	6.1%
IMPERIAL	58	68,500	55,200	13,300	19.4%
INYO	17	8,290	7,810	480	5.8%
KERN	56	385,800	347,400	38,400	10.0%
KINGS	52	55,900	50,800	5,100	9.1%
LAKE	36	29,650	27,570	2,080	7.0%
LASSEN	13	9,740	9,190	550	5.6%
LOS ANGELES	55	5,023,800	4,538,300	485,400	9.7%
MADERA	47	62,800	57,600	5,200	8.3%
MARIN	1	133,600	127,700	5,900	4.4%
MARIPOSA	28	7,830	7,310	520	6.6%
MENDOCINO	21	36,700	34,460	2,240	6.1%
MERCED	54	119,700	108,500	11,200	9.4%
MODOC	17	3,450	3,250	200	5.8%
MONO	19	9,000	8,460	530	5.9%
MONTEREY	28	224,200	209,400	14,800	6.6%
NAPA	9	71,000	67,100	3,900	5.5%
NEVADA	9	47,860	45,230	2,630	5.5%
ORANGE	20	1,580,600	1,485,700	94,900	6.0%
PLACER	6	186,700	177,100	9,600	5.1%
PLUMAS	44	8,200	7,560	640	7.8%
RIVERSIDE	42	1,113,200	1,028,400	84,700	7.6%
SACRAMENTO	36	713,400	663,300	50,100	7.0%
SAN BENITO	33	31,500	29,400	2,200	6.9%
SAN BERNARDINO	42	977,700	903,100	74,600	7.6%
SAN DIEGO	28	1,533,600	1,431,800	101,700	6.6%
SAN FRANCISCO	4	557,500	529,600	27,900	5.0%
SAN JOAQUIN	49	334,300	305,900	28,400	8.5%
SAN LUIS OBISPO	9	129,000	121,800	7,100	5.5%
SAN MATEO	2	438,000	417,700	20,200	4.6%
SANTA BARBARA	9	220,300	208,200	12,100	5.5%
SANTA CLARA	3	1,024,200	975,500	48,700	4.8%
SANTA CRUZ	25	134,400	126,000	8,500	6.3%
SHASTA	26	74,800	69,900	4,900	6.5%
SIERRA	4	1,390	1,320	70	5.0%
SISKIYOU	40	17,260	16,010	1,240	7.2%
SOLANO	41	203,500	188,600	14,900	7.3%
SONOMA	7	248,700	235,500	13,200	5.3%
STANISLAUS	46	246,400	226,800	19,700	8.0%
SUTTER	45	47,200	43,500	3,700	7.9%
TEHAMA	33	25,810	24,020	1,790	6.9%
TRINITY	7	4,920	4,660	260	5.3%
TULARE	57	201,200	180,100	21,100	10.5%
TUOLUMNE	38	20,100	18,680	1,430	7.1%
VENTURA	23	408,300	383,100	25,300	6.2%
YOLO	13	107,300	101,300	6,000	5.6%
YUBA	47	30,500	28,000	2,500	8.3%

Notes

- 1) Data may not add due to rounding. The unemployment rate is calculated using unrounded data.
- 2) Labor force data for all geographic areas now reflect the March 2020 benchmark and Census 2010 population controls at the state level.



The UC Merced Foundation
cordially invites you to the

STATE OF THE UNIVERSITY

Thursday, October 7, 2021
11:30 a.m.

The Dr. Vikram and Priya Lakireddy Grand Ballroom
University of California Merced
5200 North Lake Road
Merced, CA

For tickets and additional information please visit
engage.ucmerced.edu/SOTU2021
Limited seating available