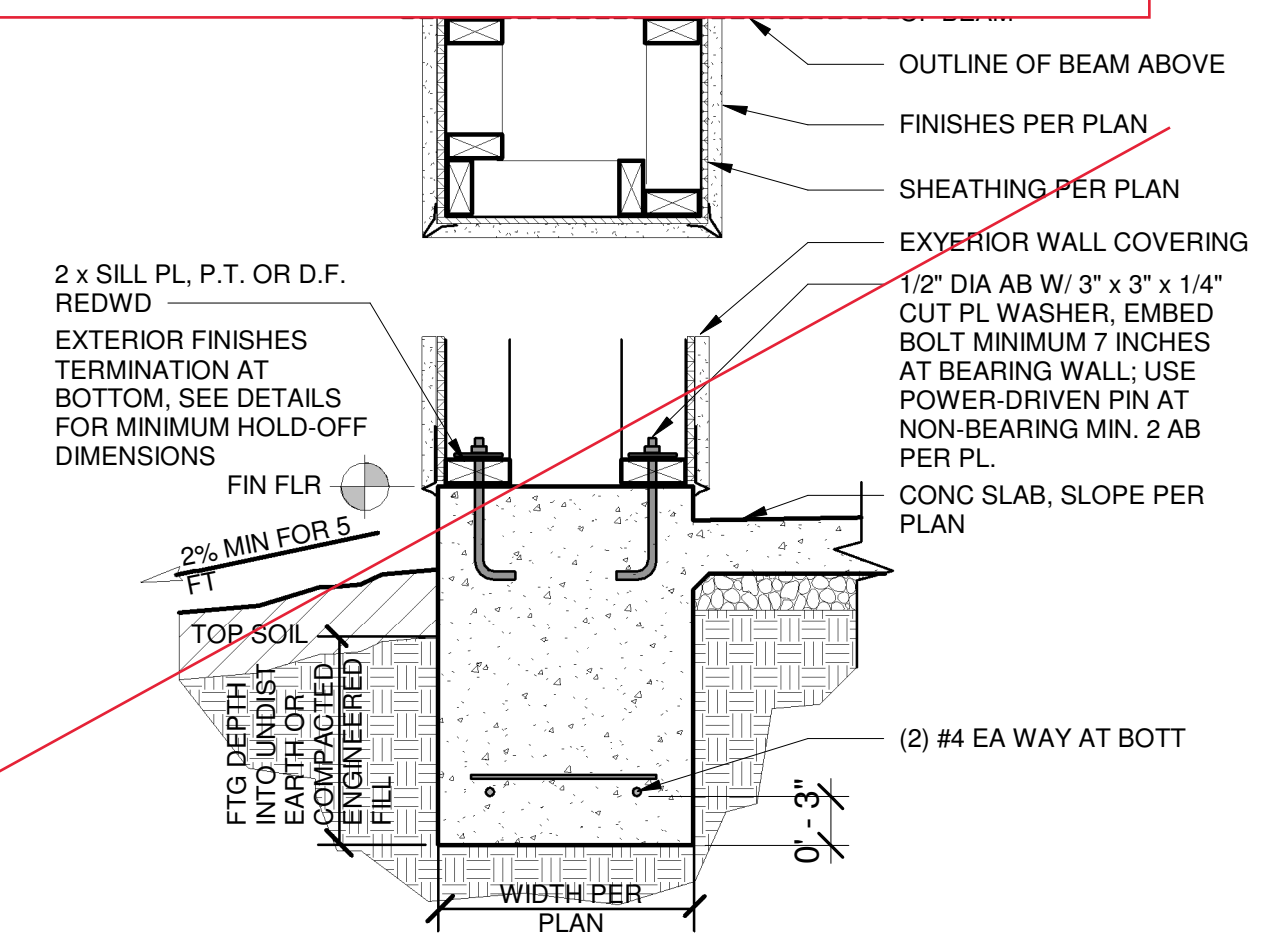
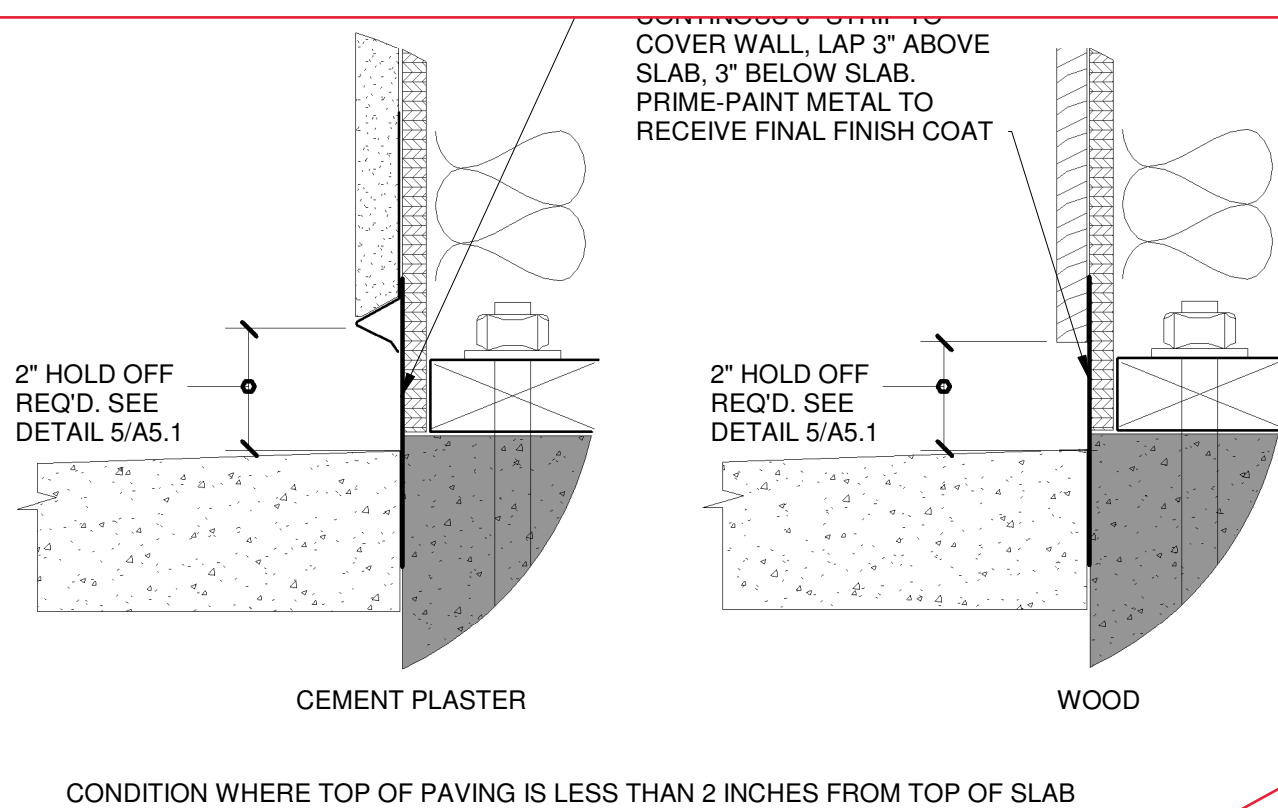
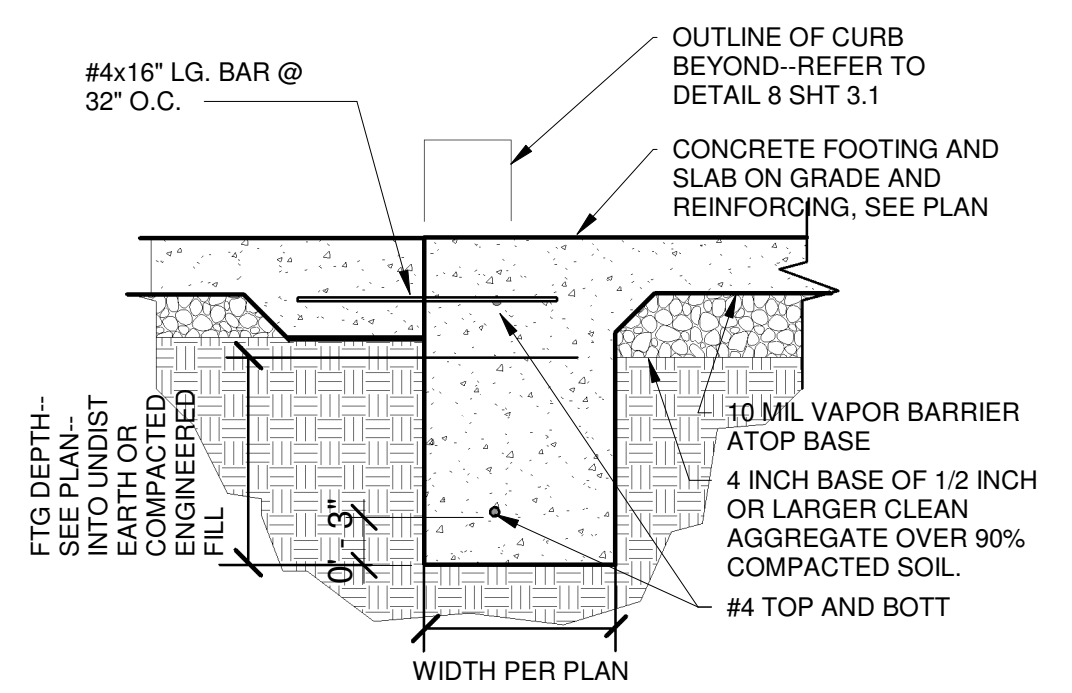
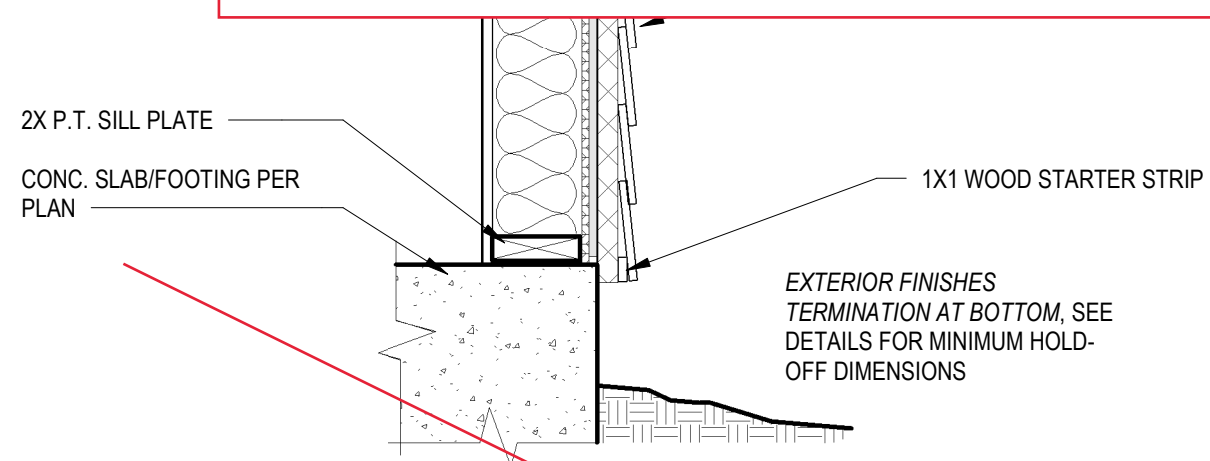
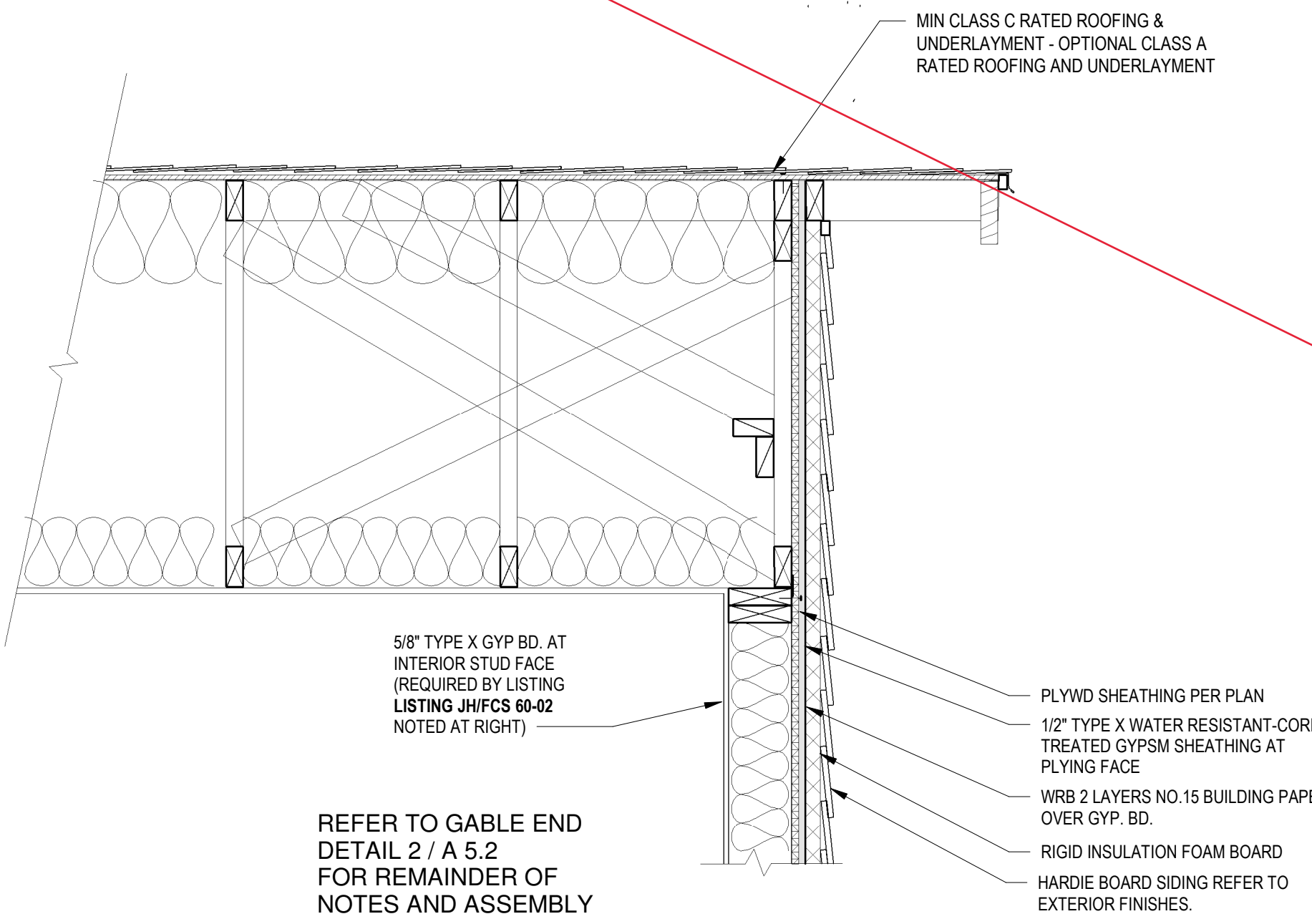


EXAMPLE OF PRE-APPROVED PLANS. PLANS AVAILABLE FOR 498, 749, OR 1,190 SF. LAYOUTS IN THREE ARCHITECTURAL STYLES THROUGH THE CITY OF MERCED PRE-APPROVED ADU PROGRAM. CONTACT INSPECTION SERVICES DIVISION AT (209) 385-4773 OR INSPECTIONSERVICESWEB@CITYOFMERCED.ORG FOR MORE INFORMATION.

REFER TO DETAIL 1/A FOR REMAINING NOTES AND ASSEMBLY
5/8" TYPE X GYP BD INTERIOR STUD FACE (REQUIRED BY LISTING JHIFCS 60-02 NOTED AT RIGHT)



9 FIRE RATED ASSEMBLY
1" = 1'-0"

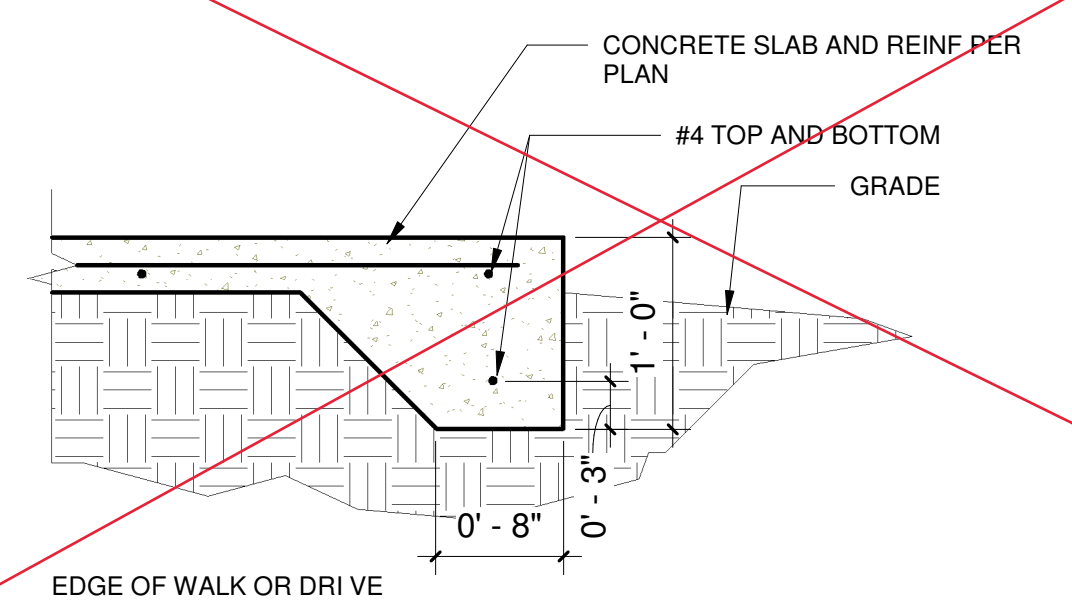


11 FIRE RATED GABLE END
1" = 1'-0"

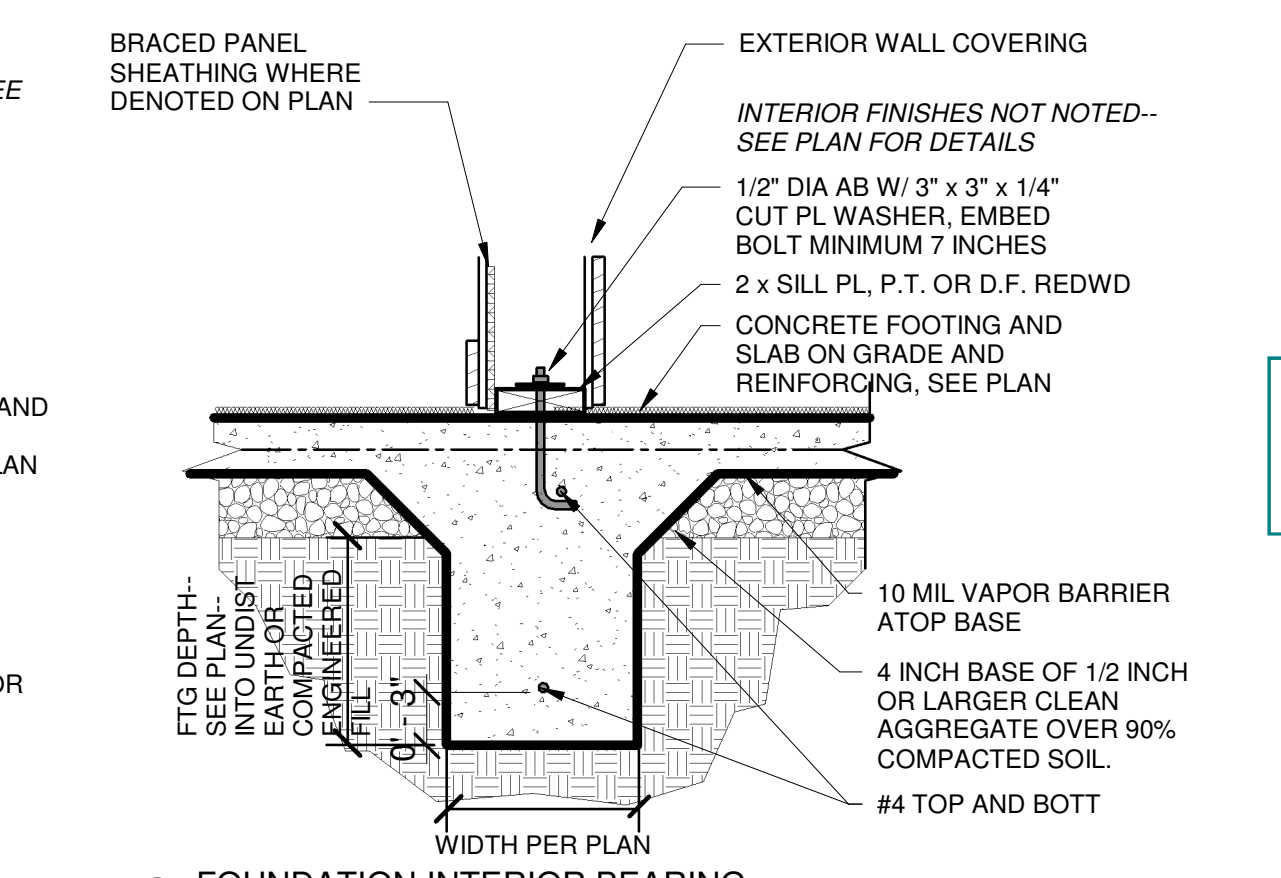
12 FOUNDATION AT VEHICLE DOOR
1" = 1'-0"

6 EXTERIOR TERMINATION ALTERNATE
3" = 1'-0"

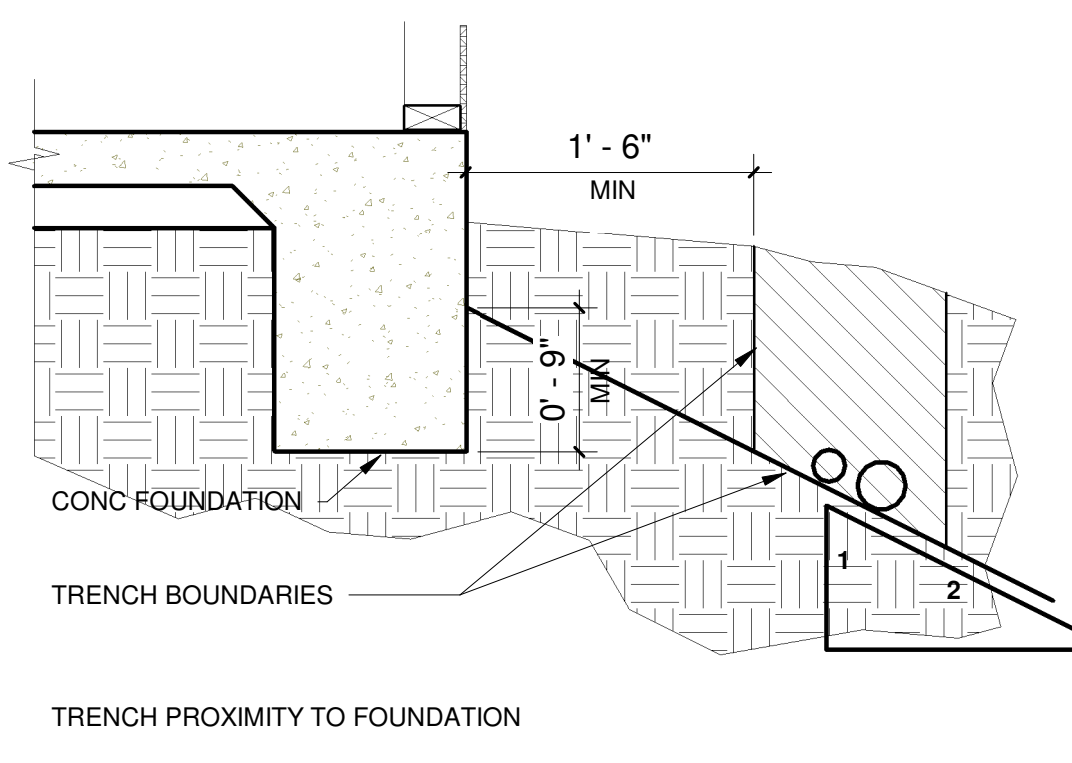
2 WOOD BOX COLUMN
1" = 1'-0"



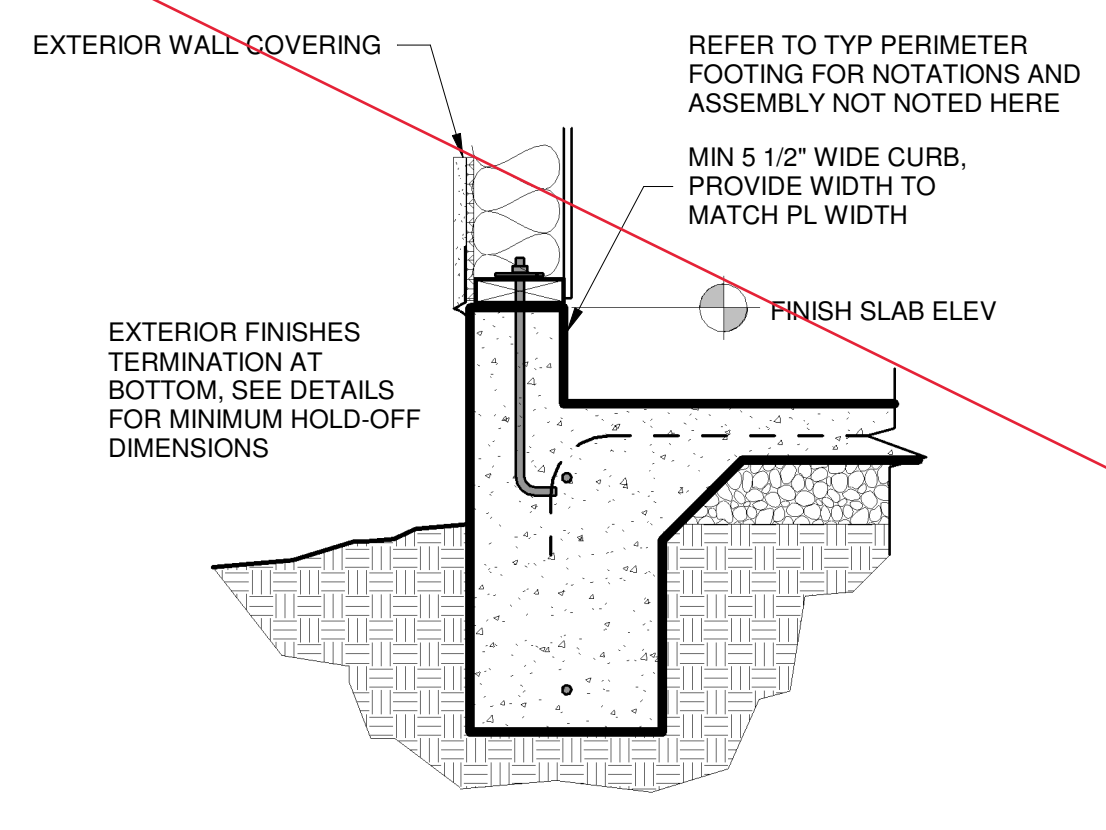
7 FOUNDATION PERIMETER FOOTING
1" = 1'-0"



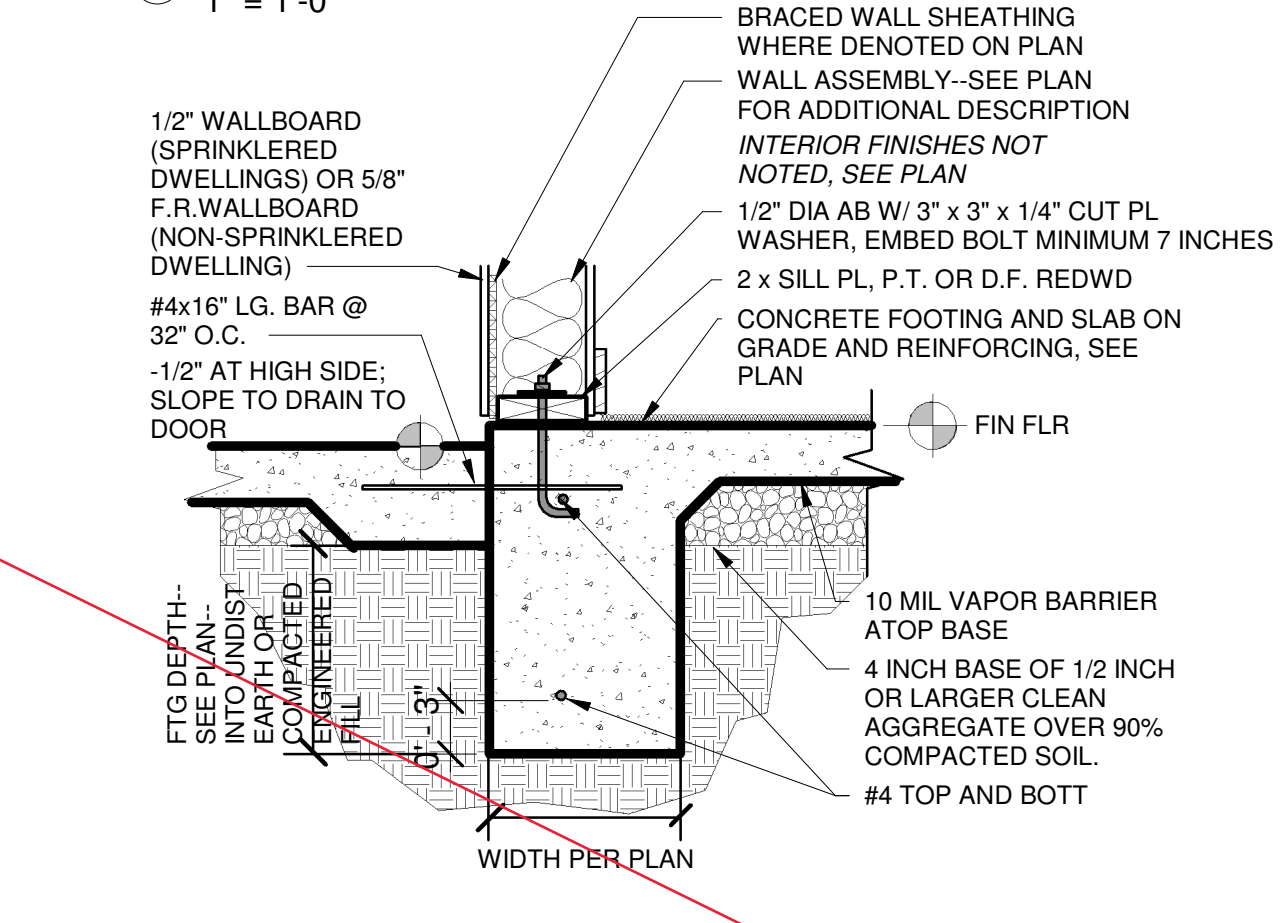
3 FOUNDATION INTERIOR BEARING
1" = 1'-0"



10 FOUNDATION CONCRETE JUNCTURES
1" = 1'-0"



8 FOUNDATION GARAGE CURB ON FOOTING
1" = 1'-0"



4 FOUNDATION COMMON WALL FOOTING
1" = 1'-0"

CITY OF MERCED
ACCESSORY DWELLING UNIT PROGRAM

498
CANOGA

No.	DATE	Description
A	5/11/2022	SITE PLAN REVIEW
B	6/13/2022	SITE PLAN REVIEW
C	8/31/2022	DRAFT RELEASE
D	9/29/2022	DRAFT RELEASE
1		
2		
3		

Project Number
2210.2

A5.1
set date: 09/29/2022