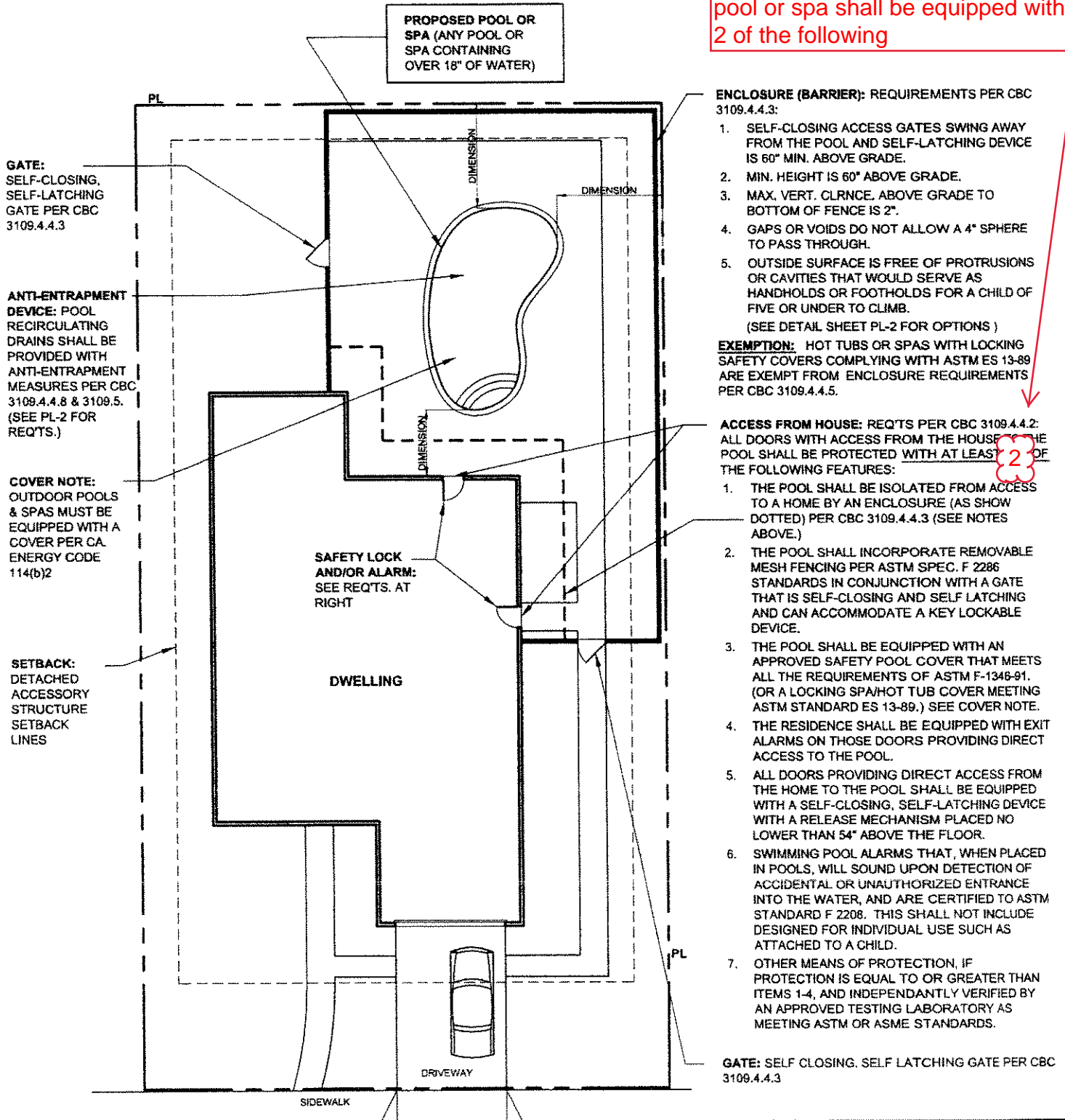


RESIDENTIAL SWIMMING POOL / SPA ENCLOSURE MINIMUM REQUIREMENTS - CBC

SB 442-Effective 1/1/18
New or remodeling of Swimming pool or spa shall be equipped with 2 of the following



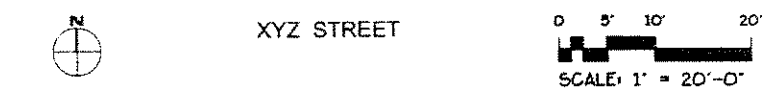
- ENCLOSURE (BARRIER):** REQUIREMENTS PER CBC 3109.4.4.3:
1. SELF-CLOSING ACCESS GATES SWING AWAY FROM THE POOL AND SELF-LATCHING DEVICE IS 60" MIN. ABOVE GRADE.
 2. MIN. HEIGHT IS 60" ABOVE GRADE.
 3. MAX. VERT. CLRNCE. ABOVE GRADE TO BOTTOM OF FENCE IS 2".
 4. GAPS OR VOIDS DO NOT ALLOW A 4" SPHERE TO PASS THROUGH.
 5. OUTSIDE SURFACE IS FREE OF PROTRUSIONS OR CAVITIES THAT WOULD SERVE AS HANDHOLDS OR FOOTHOLDS FOR A CHILD OF FIVE OR UNDER TO CLIMB.
(SEE DETAIL SHEET PL-2 FOR OPTIONS)
- EXEMPTION:** HOT TUBS OR SPAS WITH LOCKING SAFETY COVERS COMPLYING WITH ASTM ES 13-89 ARE EXEMPT FROM ENCLOSURE REQUIREMENTS PER CBC 3109.4.4.5.
- ACCESS FROM HOUSE:** REQ'TS PER CBC 3109.4.4.2: ALL DOORS WITH ACCESS FROM THE HOUSE TO THE POOL SHALL BE PROTECTED WITH AT LEAST 2 OF THE FOLLOWING FEATURES:
1. THE POOL SHALL BE ISOLATED FROM ACCESS TO A HOME BY AN ENCLOSURE (AS SHOWN DOTTED) PER CBC 3109.4.4.3 (SEE NOTES ABOVE.)
 2. THE POOL SHALL INCORPORATE REMOVABLE MESH FENCING PER ASTM SPEC. F 2286 STANDARDS IN CONJUNCTION WITH A GATE THAT IS SELF-CLOSING AND SELF LATCHING AND CAN ACCOMMODATE A KEY LOCKABLE DEVICE.
 3. THE POOL SHALL BE EQUIPPED WITH AN APPROVED SAFETY POOL COVER THAT MEETS ALL THE REQUIREMENTS OF ASTM F-1346-91. (OR A LOCKING SPA/HOT TUB COVER MEETING ASTM STANDARD ES 13-89.) SEE COVER NOTE.
 4. THE RESIDENCE SHALL BE EQUIPPED WITH EXIT ALARMS ON THOSE DOORS PROVIDING DIRECT ACCESS TO THE POOL.
 5. ALL DOORS PROVIDING DIRECT ACCESS FROM THE HOME TO THE POOL SHALL BE EQUIPPED WITH A SELF-CLOSING, SELF-LATCHING DEVICE WITH A RELEASE MECHANISM PLACED NO LOWER THAN 54" ABOVE THE FLOOR.
 6. SWIMMING POOL ALARMS THAT, WHEN PLACED IN POOLS, WILL SOUND UPON DETECTION OF ACCIDENTAL OR UNAUTHORIZED ENTRANCE INTO THE WATER, AND ARE CERTIFIED TO ASTM STANDARD F 2208. THIS SHALL NOT INCLUDE DESIGNED FOR INDIVIDUAL USE SUCH AS ATTACHED TO A CHILD.
 7. OTHER MEANS OF PROTECTION, IF PROTECTION IS EQUAL TO OR GREATER THAN ITEMS 1-4, AND INDEPENDANTLY VERIFIED BY AN APPROVED TESTING LABORATORY AS MEETING ASTM OR ASME STANDARDS.
- GATE:** SELF CLOSING, SELF LATCHING GATE PER CBC 3109.4.4.3

GATE:
SELF-CLOSING,
SELF-LATCHING
GATE PER CBC
3109.4.4.3

**ANTI-ENTRAPMENT
DEVICE:** POOL
RECIRCULATING
DRAINS SHALL BE
PROVIDED WITH
ANTI-ENTRAPMENT
MEASURES PER CBC
3109.4.4.8 & 3109.5.
(SEE PL-2 FOR
REQ'TS.)

COVER NOTE:
OUTDOOR POOLS
& SPAS MUST BE
EQUIPPED WITH A
COVER PER CA
ENERGY CODE
114(b)2

SETBACK:
DETACHED
ACCESSORY
STRUCTURE
SETBACK
LINES



THIS DRAWING DEPICTS MINIMUM CODE REQUIREMENTS PER CBC 2013. INFORMATION IS FOR REFERENCE ONLY AND IS NOT A SUBSTITUTE FOR ACCURATE DRAWINGS PREPARED FOR EACH PROPOSED CONSTRUCTION PROJECT.

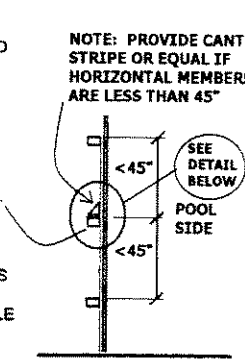
<p>NAME, ADDRESS AND PHONE NO. OF DESIGNER XXX XXX XXX XXX XXX XXX XXX XXX</p> <p>WET SIGNATURE OF DESIGNER ON EACH SHEET (AND PROFESSIONAL STAMP IF APPLICABLE)</p>	<p>EXAMPLE RESIDENTIAL POOL</p>	<p>SITE PLAN</p> <p>SAMPLE DRAWING</p>	<p>SCALE: 1" = 20'-0"</p> <p>DATE:</p> <hr/> <p>SHEET NO. PL-1</p>
--	--	---	---

RESIDENTIAL SWIMMING POOL / SPA ENCLOSURE MINIMUM REQUIREMENTS - CBC

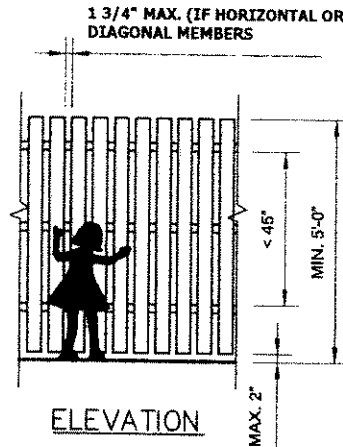
THIS DRAWING DEPICTS MINIMUM CODE REQUIREMENTS PER CBC INFORMATION IS FOR REFERENCE ONLY AND IS NOT A SUBSTITUTE FOR ACCURATE DRAWINGS PREPARED FOR EACH PROPOSED CONSTRUCTION PROJECT.

OPTIONS FOR ENCLOSURE (BARRIER): REQUIREMENTS PER CBC 3109.4.4.3:

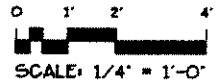
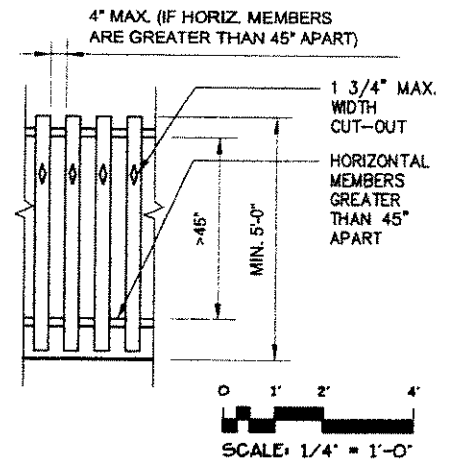
1. MIN. HEIGHT IS 60" ABOVE GRADE.
2. MAX. VERT. CLRNC. ABOVE GRADE TO BOTTOM OF FENCE IS 2".
3. GAPS OR VOIDS DO NOT ALLOW A 4" SPHERE TO PASS THROUGH.
4. OUTSIDE SURFACE IS FREE OF PROTRUSIONS OR CAVITIES THAT WOULD SERVE AS HANDHOLDS OR FOOTHOLDS FOR A CHILD OF FIVE OR UNDER TO CLIMB.
5. A NON-REMOVABLE MESH FENCING MAY BE USED IF IT MEETS THE ASTM SPEC. F 2286 AND WITH A GATE THAT IS SELF-CLOSING AND SELF-LATCHING AND CAN ACCOMMODATE A KEY LOCABLE DEVICE.



SECTION



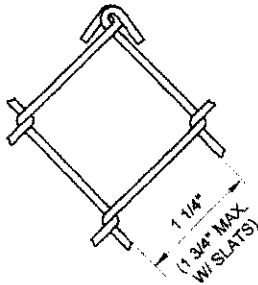
ELEVATION



EXEMPTION: HOT TUBS OR SPAS WITH LOCKING SAFETY COVERS COMPLYING WITH ASTM ES 13-89 ARE EXEMPT FROM ENCLOSURE REQUIREMENTS PER CBC 3109.4.4.5.

GENERIC FENCE DETAIL FOR PRIVATE POOL OR SPA ENCLOSURE

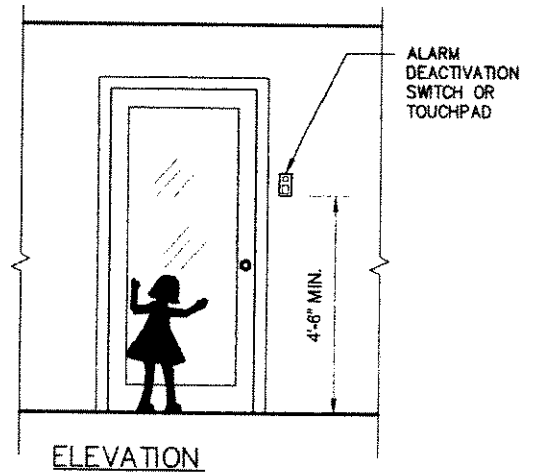
CHAIN LINK REQUIREMENTS:
THE MAX. MESH SIZE FOR CHAIN LINK FENCES SHALL BE 1 1/4" SQUARE UNLESS THE FENCE IS PROVIDED WITH SLATS FASTENED AT THE TOP OR BOTTOM.



CHAIN LINK FENCE FOR PRIVATE POOL OR SPA ENCLOSURE

DOOR ALARM REQUIREMENTS:
DOORS EQUIPPED WITH EXIT ALARMS SHALL CONFORM TO CBC 3109.4.1.8 AS FOLLOWS:

1. LISTED IN ACCORDANCE WITH UL 2017.
2. ALARM SHALL ACTIVATE WITHIN 7 SECONDS AND SOUND FOR A MIN OF 30 SECONDS AND BE AUDIBLE THROUGHOUT THE HOUSE.
3. THERE SHALL BE A MANUAL SWITCH TO DEACTIVATE THE ALARM FOR NOT MORE THAN 15 SECONDS MOUNTED A MIN. OF 54" ABOVE THE DOOR THRESHOLD.



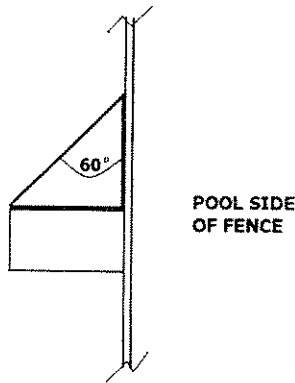
ELEVATION

SAFETY ALARM AT DOOR

ANTI-ENTRAPMENT REQUIREMENTS FOR ALL POOLS & SPAS:
PER CBC 3109.5, SUCTION OUTLETS SHALL BE DESIGNED TO PRODUCE CIRCULATION THROUGHOUT THE POOL OR SPA. SINGLE OUTLET SYSTEMS, SUCH AS AUTOMATIC VACUUMS SHALL BE PROTECTED AGAINST USER ENTRAPMENT

1. SUCTION OUTLETS SHALL BE PROVIDED WITH A COVER THAT CONFORMS TO ASME A112.19.8M, OR A 12" X 12" MIN. DRAIN GRATE, OR AN APPROVED CHANNEL DRAIN SYSTEM.
2. SINGLE OR MULTIPLE CIRCULATION SYSTEMS SHALL BE EQUIPPED WITH AN ATMOSPHERIC VACUUM RELIEF SHOULD GRATE COVERS BECOME MISSING OR BROKEN. THE RELIEF SHALL EITHER CONFORM TO ASME A112.19.17, OR BE AN APPROVED GRAVITY DRAINAGE SYSTEM.
3. SINGLE OR MULTIPLE-PUMP CIRCULATION SYSTEMS SHALL BE PROVIDED WITH A MINIMUM OF TWO APPROVED-TYPE SUCTION OUTLETS LOCATED AT LEAST 3' APART. WATER SHALL BE DRAWN THROUGH THEM SIMULTANEOUSLY THROUGH A VACUUM-PROTECTED LINE TO THE PUMP(S).
4. POOL CLEANER FITTINGS (WHERE PROVIDED) SHALL BE ACCESSIBLE AT LEAST 6" TO 12" MAX. BELOW THE MIN. OPERATIONAL WATER LEVEL OR ATTACHED TO SKIMMER.

ANTI-ENTRAPMENT DEVICE REQUIREMENTS



CANT STRIP DETAIL

NAME, ADDRESS AND PHONE NO. OF DESIGNER
XXX XXX XXX XXX
XXX XXX XXX XXX

WET SIGNATURE OF DESIGNER ON EACH SHEET
(AND PROFESSIONAL STAMP IF APPLICABLE)

**EXAMPLE
RESIDENTIAL POOL**

DETAILS

SAMPLE DRAWING

SCALE: 1/4" = 1'-0"
DATE:

SHEET NO.

PL-2