

**CAMPUS PARKWAY EXTENSION UPDATE**

# CAMPUS PARKWAY OVERVIEW

N|V|5



- **Located on the East Side of Merced County**
- **North/South Expressway**
- **4.5 miles of roadway from Mission Ave Interchange to Yosemite Ave.**
- **Composed of 4 projects**
- **Includes 9 bridges, 2 roundabouts, a meandering bike path, and 2 traffic signals**
- **Over a million cubic yards of earthwork**

# PROJECT TEAM

# N|V|5

## Implementing Agency



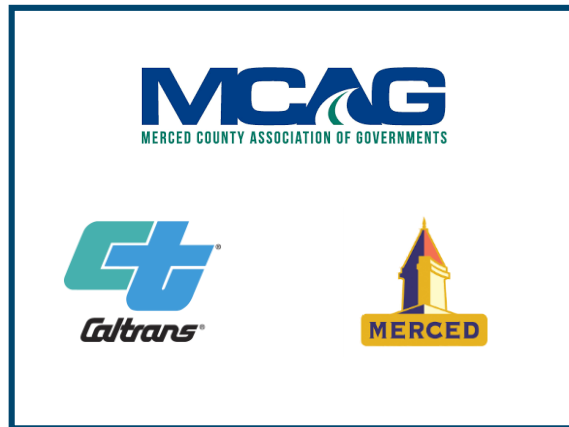
## Designer



## Construction Manager



## Partners



## Contractors



## 3<sup>rd</sup> Parties



# SEGMENT 1



- **Completed in 2009**
- **From Mission Interchange to Child's Ave**
- **Includes a section of roadway and a meandering bike path**

# SEGMENT 1

N|V|5



# CHILD'S AVE SIGNALIZATION PROJECT

N|V|5



- **Signalization of the existing Campus Parkway and Childs Ave intersection**
- **\$386,000 construction cost**
- **Currently waiting to energize**

# SEGMENT 2

N|V|5



- **\$30 million construction cost**
- **From Child's Ave. to SR 140**
- **680,000 CY of earthwork moved**
- **Includes twin 300' bridges over BNSF and SR 140**
- **Scheduled completion Feb. 2020**

# SEGMENT 2 - PROGRESS

N|V|5





# SEGMENT 2 - PROGRESS

N|V|5



# SEGMENT 2 - PROGRESS

N|V|5



# SEGMENT 2 - PROGRESS

N|V|5



# SEGMENT 2 - PROGRESS

N|V|5



# SEGMENT 2 - PROGRESS

N|V|5



# SEGMENT 2 - PROGRESS

N|V|5



# SEGMENT 2 - PROGRESS

N|V|5



# SEGMENT 2 - PROGRESS

N|V|5





# SEGMENT 2 - PROGRESS

N|V|5



# SEGMENT 3

N|V|5

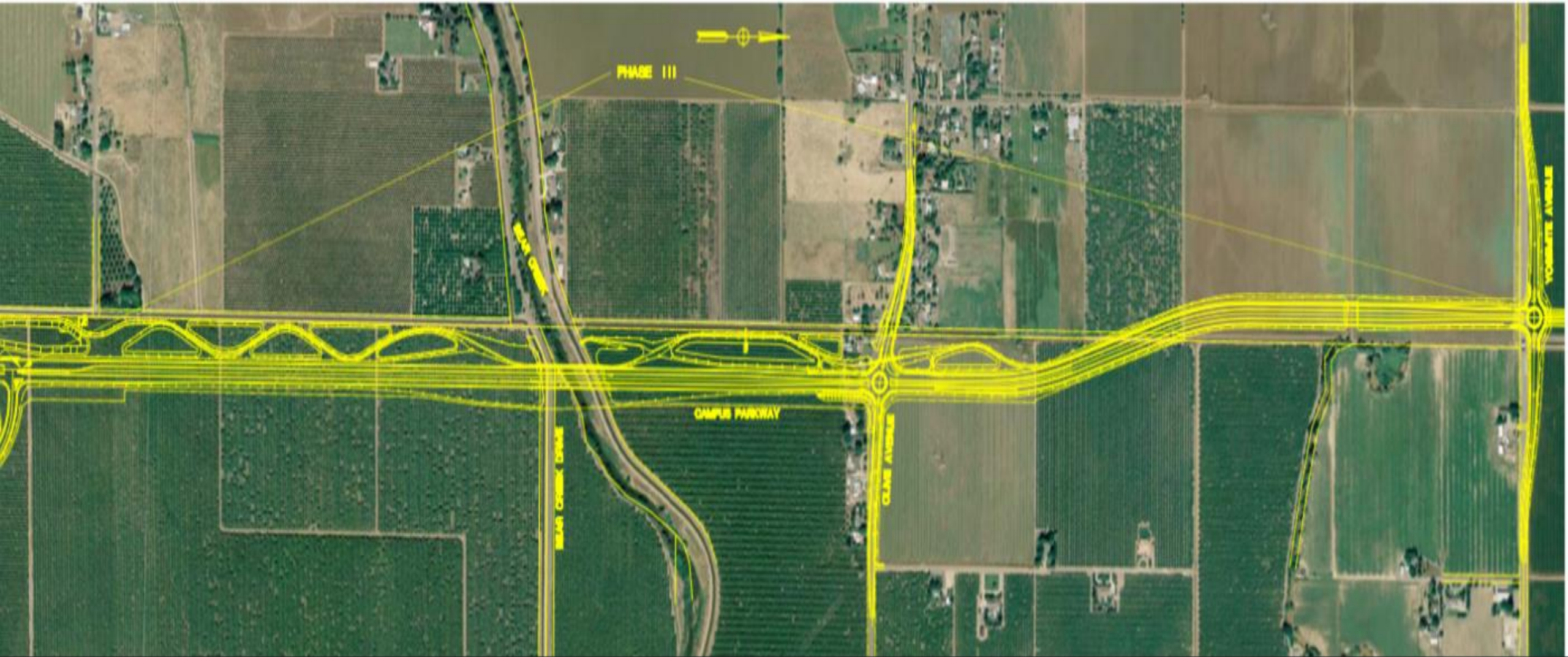


- **From SR 140 to Yosemite Ave.**
- **Estimated cost of construction: \$47 million**
- **Bid opening 7/24/2019**

- **Twin 500' bridges**
- **Estimated 375,000 CY of earthwork to be moved**

# SEGMENT 3

N|V|5



# SEGMENT 3

N|V|5



# SEGMENT 3 – OLIVE AVENUE

N|V|5



# SEGMENT 3 YOSEMITE AVENUE

N|V|5

