

BELLEVUE CORRIDOR COMMUNITY PLAN

Meeting Overview

Community Advisory Committee
March 14, 2013

MEETING OVERVIEW

- E. DRAFT BELLEVUE COMMUNITY PLAN CHAPTERS
- F. URBAN VILLAGE DESIGN
- G. RECAP - INITIAL LAND USE OPTION –originally presented on 1/31/13
- H. OVERVIEW OF WORKSHOP PURPOSE AND SETUP
- I. BREAK - APPROX 2:45 pm TO 3:00 PM
- J. LAND USE PLAN DESIGN WORKSHOP
- K. NEXT STEPS
- L. ADJOURNMENT TO MAY 2, 2013, AT 1:30 P.M.



BELLEVUE CORRIDOR COMMUNITY PLAN

Agenda Item E: Draft Bellevue Community Plan Chapters

Community Advisory Committee

March 14, 2013

COMMUNITY PLAN OVERVIEW

PLAN CONTENT

PLAN FRAMEWORK

GENERAL PLAN INFLUENCE

PLAN CONTENT

Chapter 1 – Introduction

Chapter 2 – Urban Expansion

Chapter 3 – Land Use

Chapter 4 – Transportation/Circulation

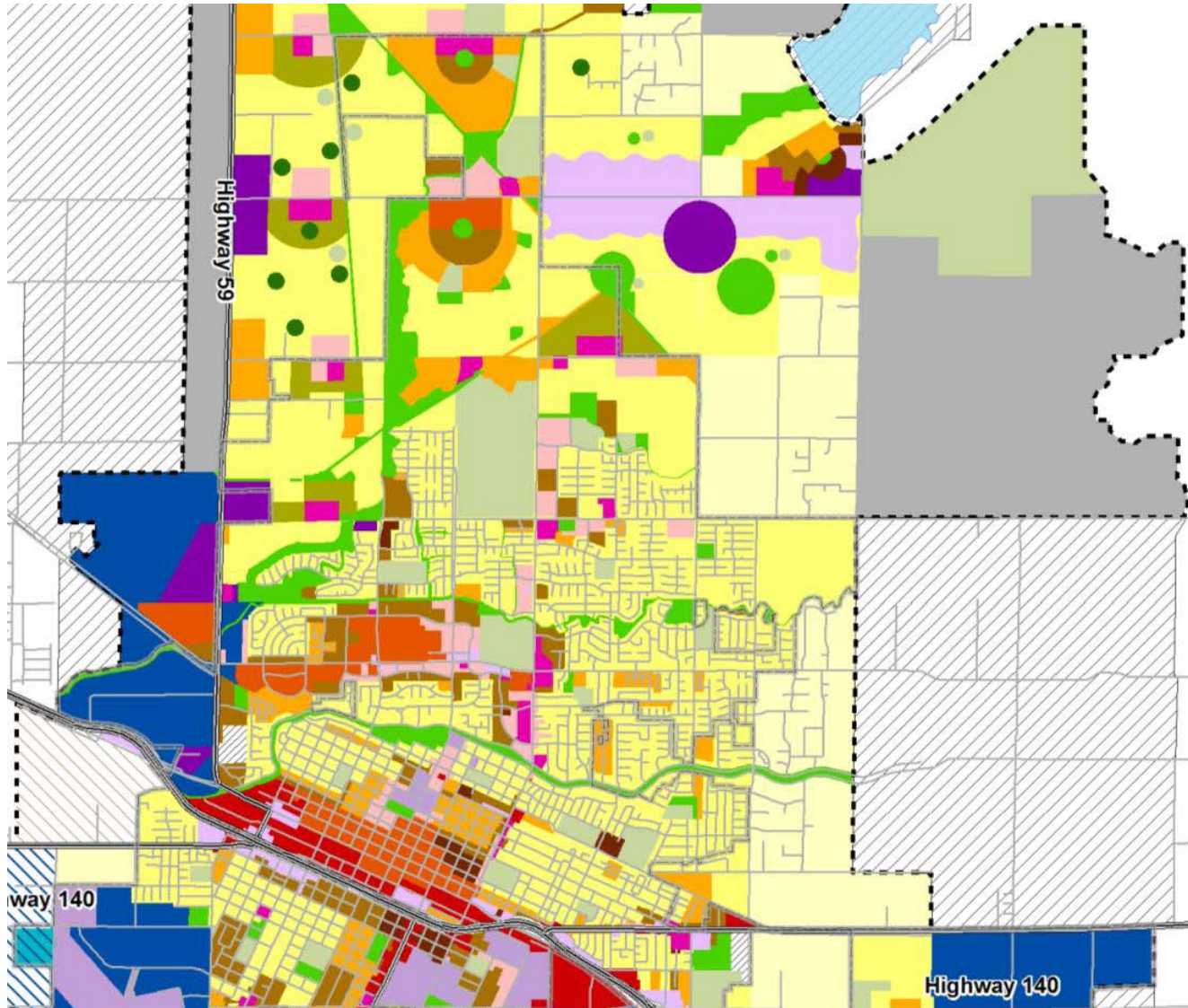
Chapter 5 – Public Services and Facilities

Chapter 6 – Urban Design

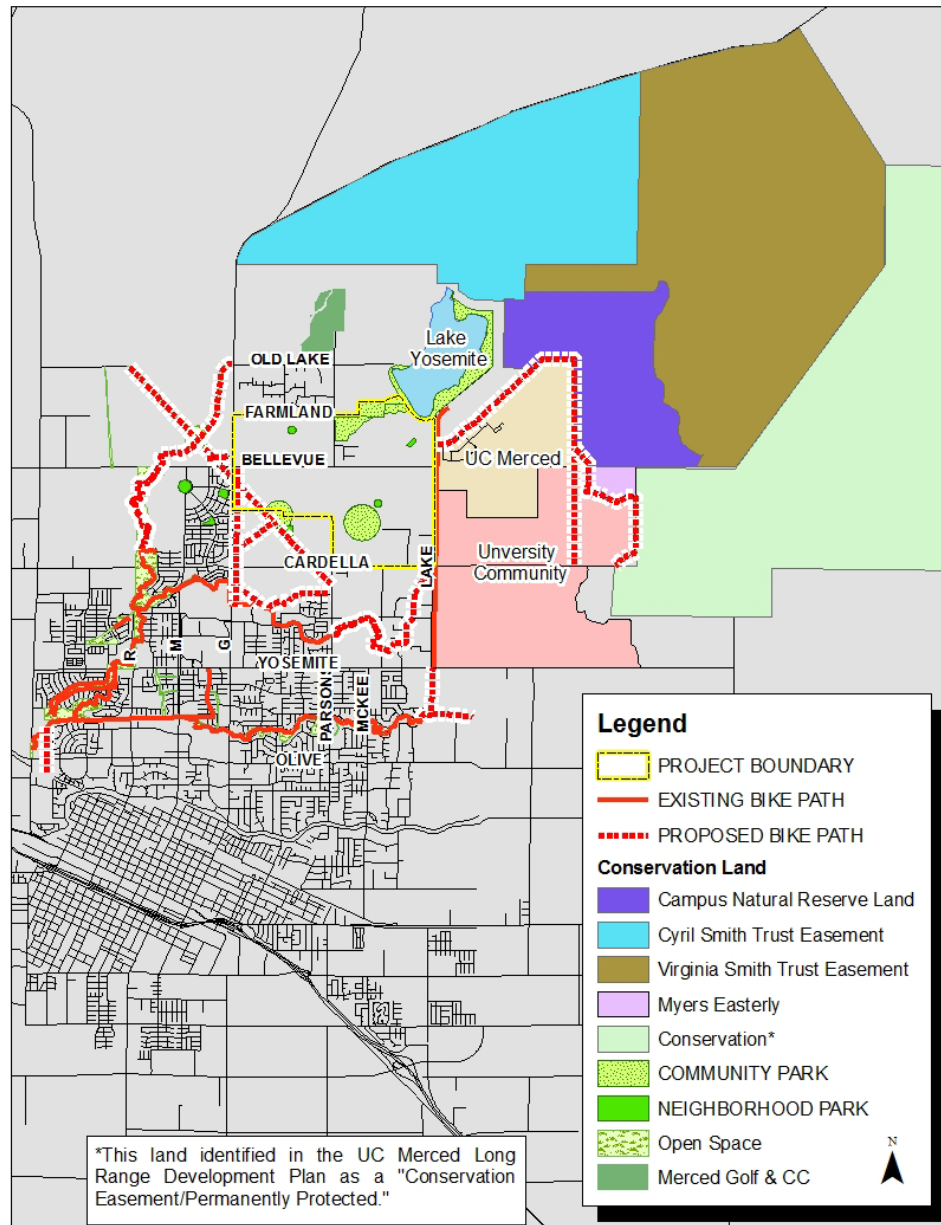
Chapter 7 – Open Space, Conservation, Recreation

Chapter 8 – Plan Maintenance

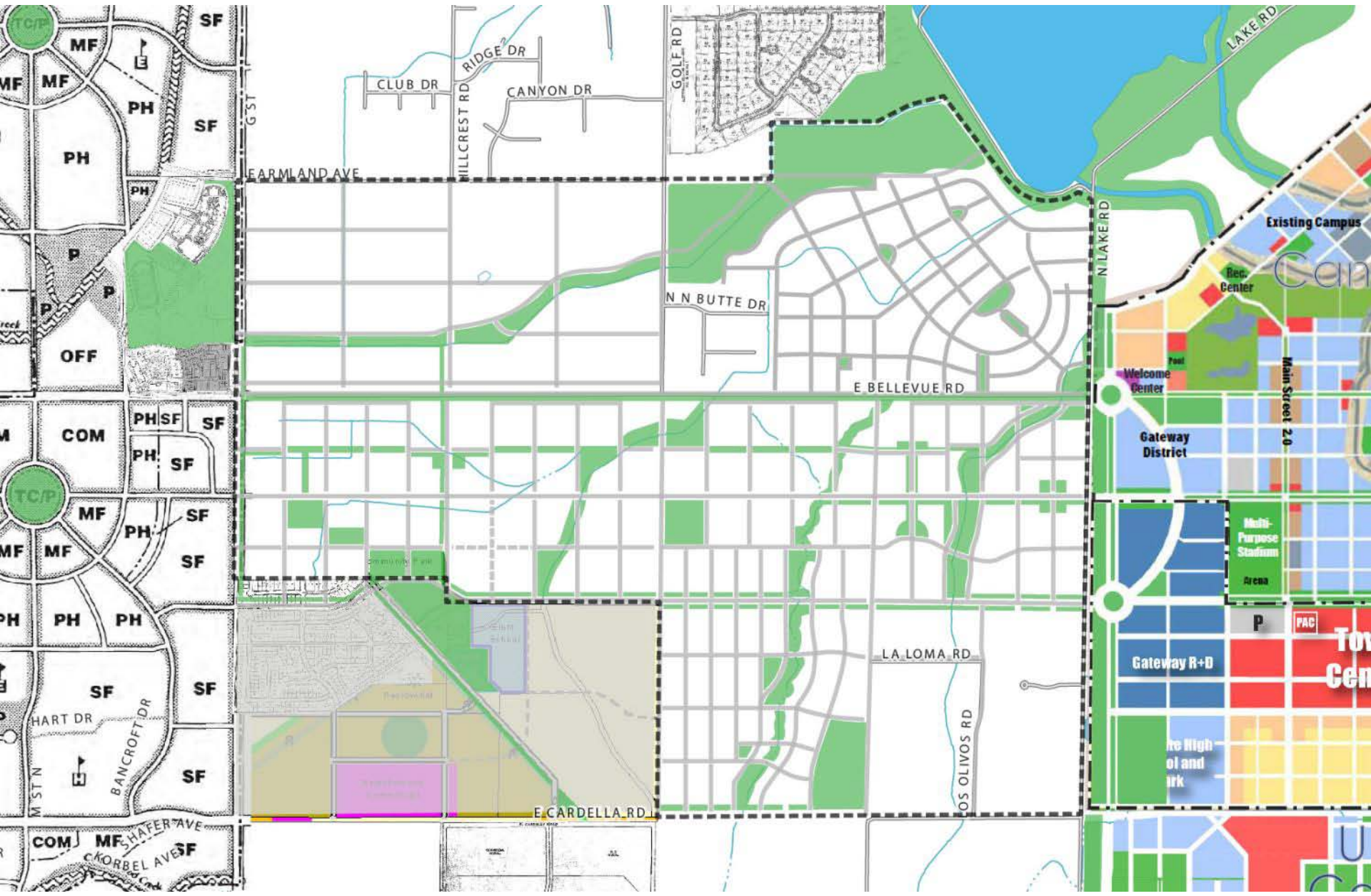
LAND USE PLAN



OPEN SPACE AND BIKEWAY CORRIDORS



STREET & OPEN SPACE NETWORK



BELLEVUE COMMUNITY PLAN POLICIES

GOAL

- _____

POLICIES

UE-1.1 _____

UE-1.2 _____

Policy UE-1.1

Implementing Actions:

1.1.a ----

1.1.b -----

1.1.c -----

1.1.d -----

PLAN FRAMEWORK

Committee and Public Comment

*Merced Vision 2030 General Plan Goals,
Policies and Actions*

COMMITTEE AND PUBLIC COMMENT

Provide **compatibility** with existing neighborhoods.

Provide **flexibility** to adapt to long-term market demands.

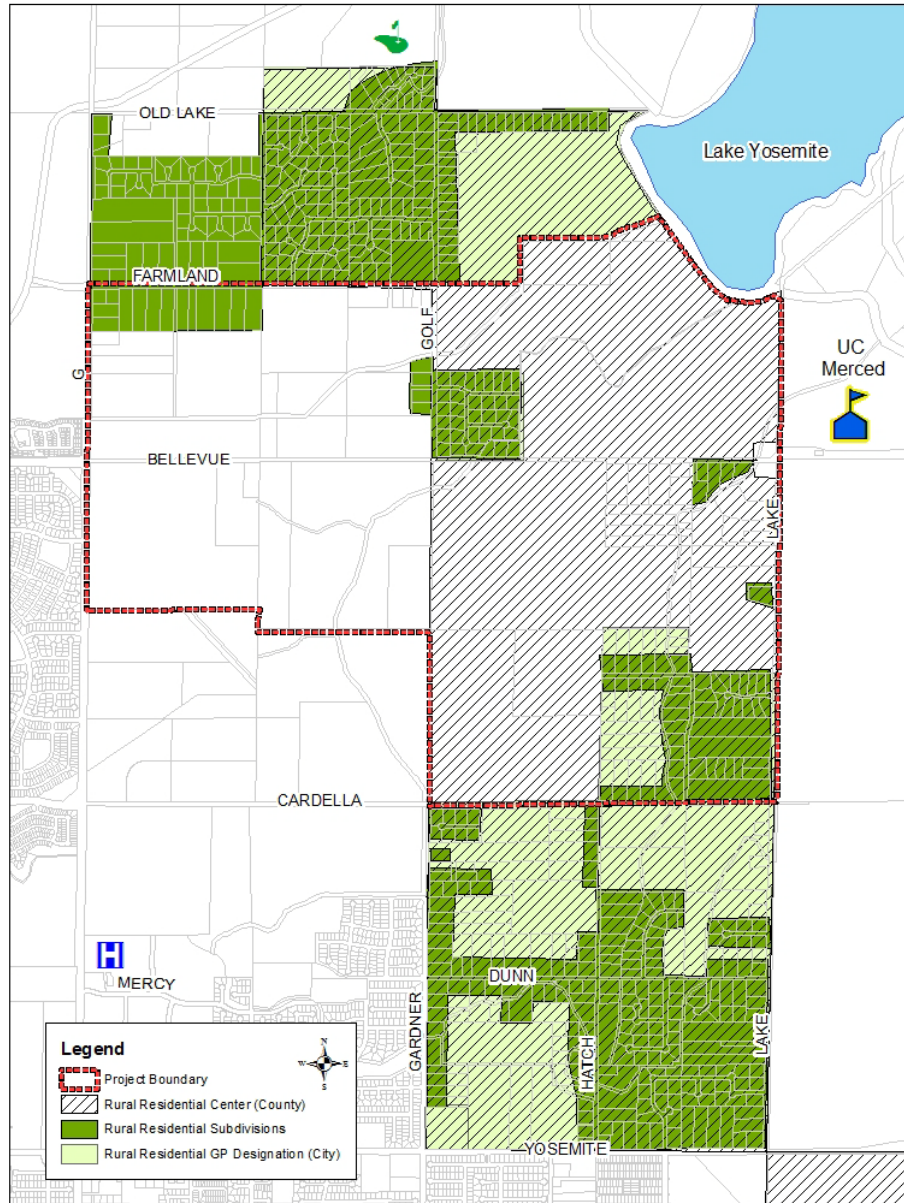
Ensure that development **compliments/leverages UC Merced** economic, physical and intellectual capital.

Provide land area for future **research and development parks**.

Create an attractive **gateway** to UC Merced.

Consider **infrastructure planning** in context of larger plan area.

RURAL RESIDENTIAL CENTERS



GP GOALS, POLICIES AND ACTIONS

CHAPTER 2: Urban Expansion

2.4 Growth and Development Sites

2.4.2 University Community Plan (UCP)

CITY'S UNIVERSITY COMMUNITY POLICY STATEMENT

***Incorporate the UCP; It should not be part of a
County Service District.***

GENERAL PLAN (GP) INFLUENCES

*State Requirement for Community Plan to be
Consistent with the GP*

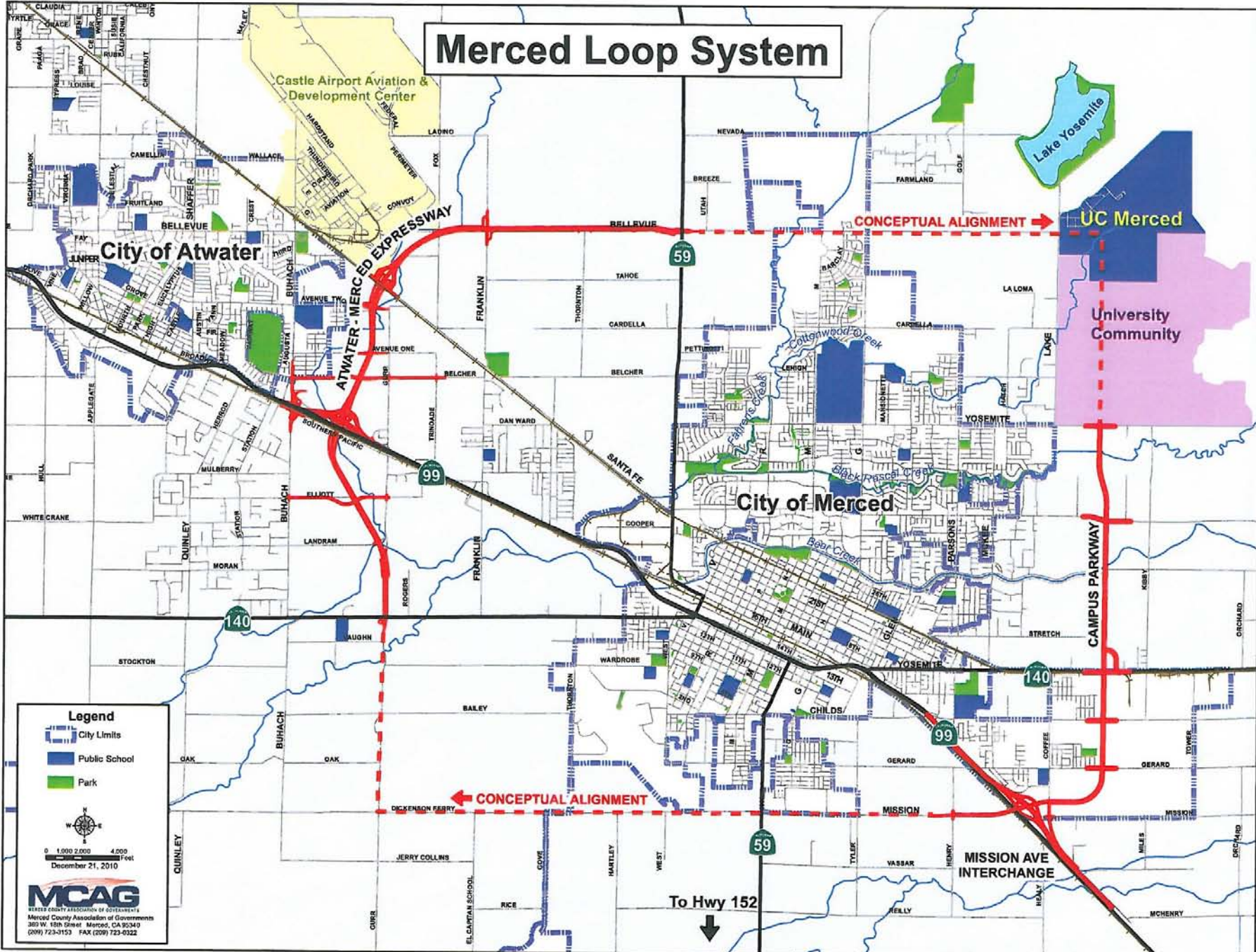
Ability to Tier off the GP EIR

Key GP Goals, Policies and Actions

GENERAL PLAN GUIDANCE FOR BELLEVUE COMMUNITY PLAN AREA

- *Use of Urban Village Model*
- *Employment Corridor*
- *A Mix of Land Uses*
- *Variety of Housing Types and Densities*
- *A Road Design that Includes Autos, Busses, Pedestrians and Bicyclists*
- *Transit Corridor*
- *Connectivity with UC Merced*

Merced Loop System



Legend

- City Limits
- Public School
- Park



0 1,000 2,000 4,000 Feet

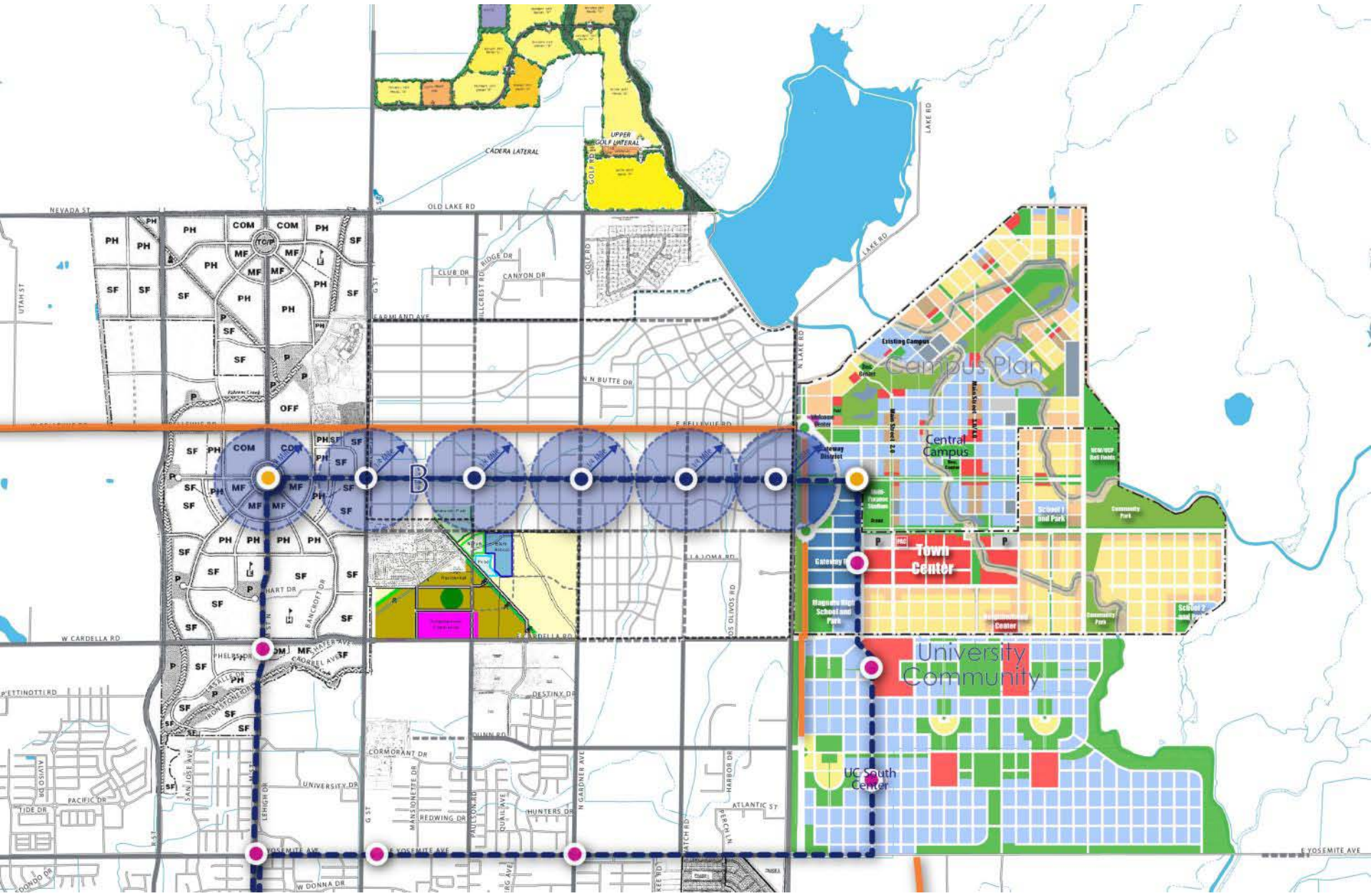
December 21, 2010

MCAG
 MERCED COUNTY ASSOCIATION OF GOVERNMENTS
 Merced County Association of Governments
 300 W. 10th Street Merced, CA 95340
 (209) 723-3153 FAX (209) 723-0322

DISTRIBUTION OF LAND USE TYPES



TRANSIT CORRIDOR PLANNING



DISCUSSION