

DRAFT BELLEVUE COMMUNITY PLAN

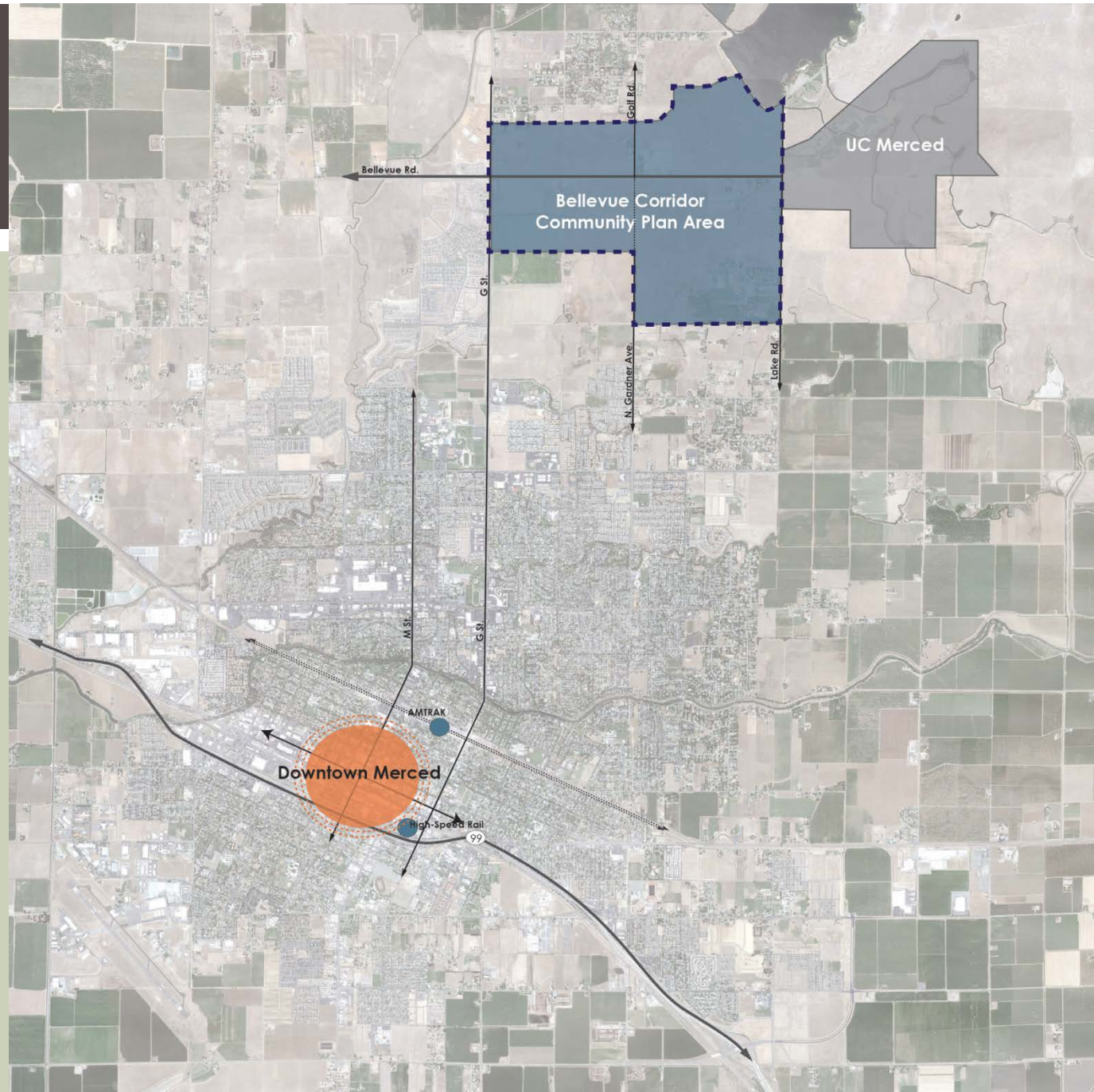


**Recreation and Parks Commission Presentation
June 23, 2014**

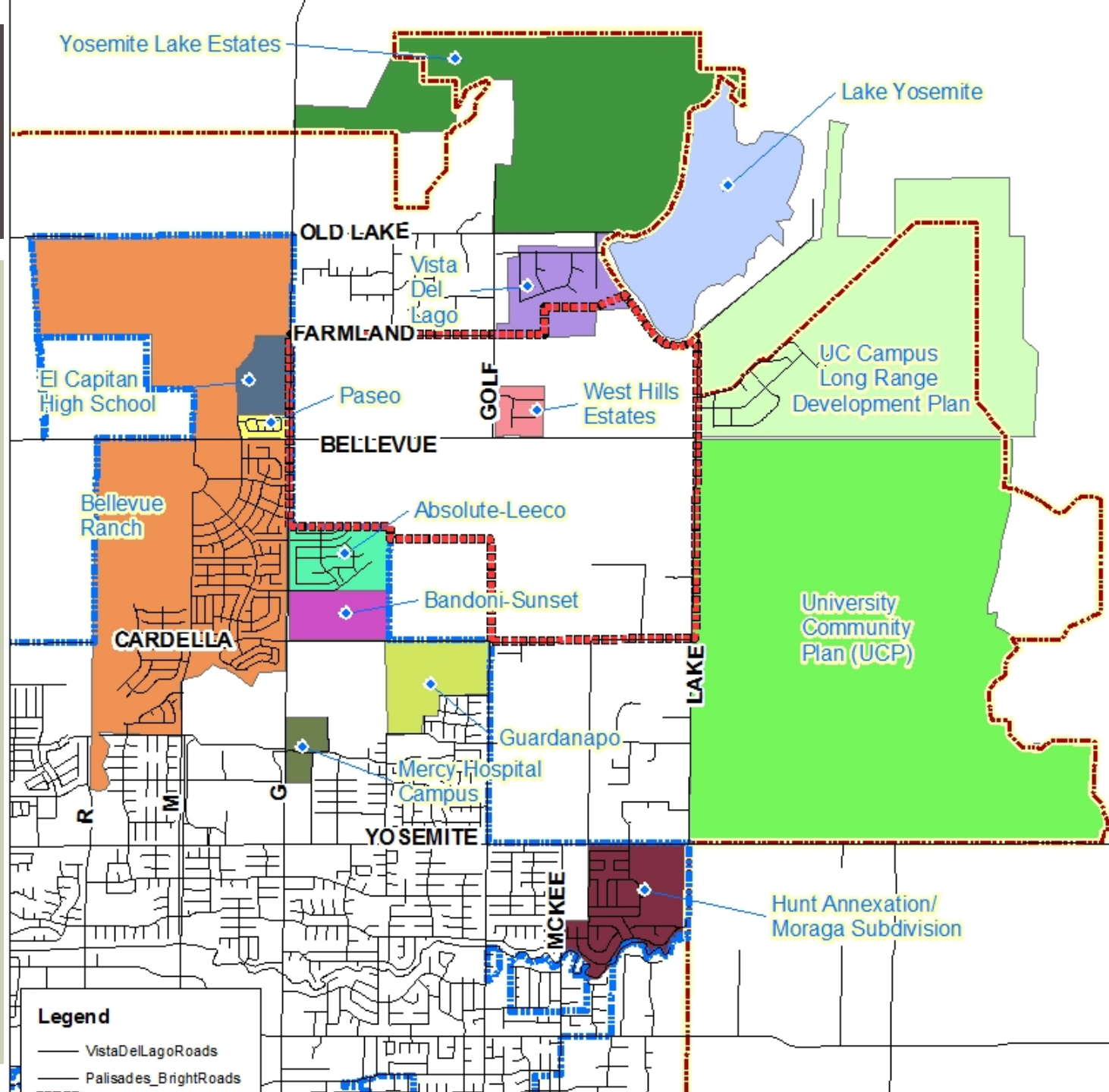
PRESENTATION OVERVIEW

- Project Overview
- Draft Plan Elements
- Recreation and Parks
- Commission Comments & Next Steps

1A - PROJECT LOCATION



1A - PROJECT LOCATION



1B - PLAN FUNCTION

- **The Plan DOES NOT:**

- annex property;
- expand long-term growth boundaries;
- change zoning designations of properties;
- buy or condemn properties; or
- ‘permit’ construction

- **The Plan DOES:**

- Provide general guidance to city staff, city residents and property owners, developers, decision-makers; and
- lays the foundation for future growth entitlements and construction projects

1C - WHY NOW?

- To identify locations for research and development sites;
- To assure complementary and compatible future development;
- To enable master planning (circulation, sewer, water, emergency services); and
- To be responsive to the market

General Plan
Community Plan

Annexation

Special
Permit

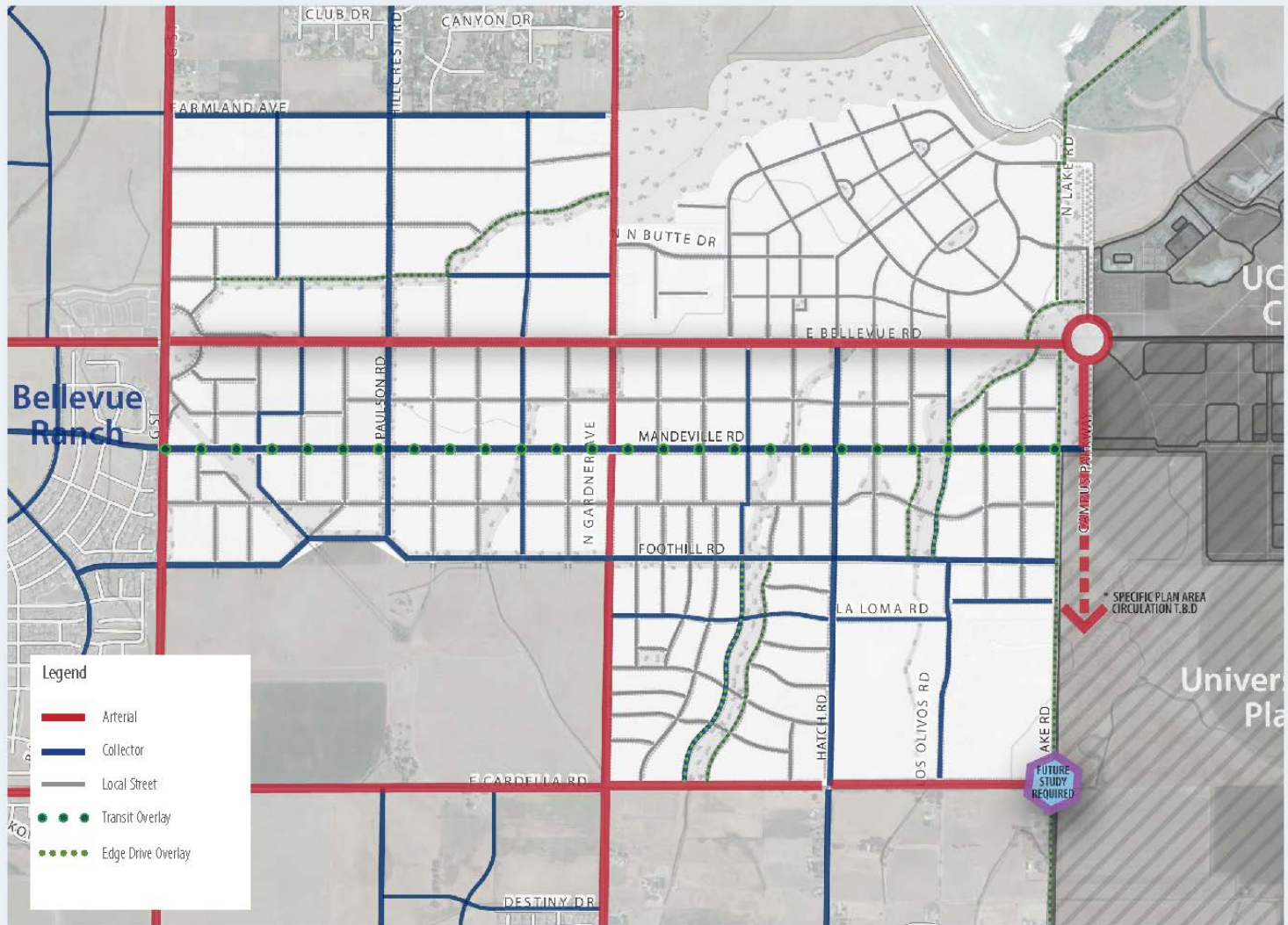
Building
Permits

2. DRAFT PLAN ELEMENTS

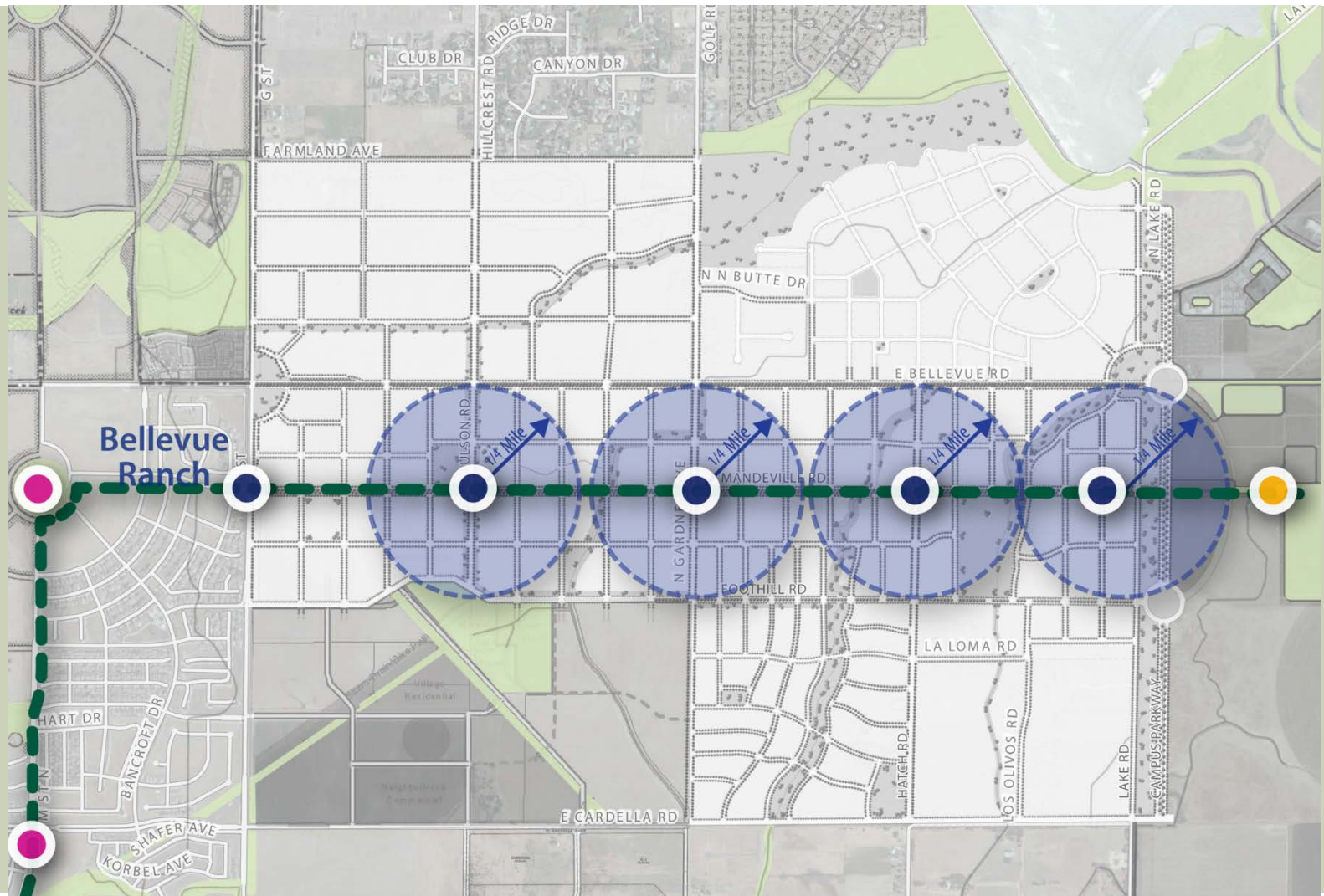
- Vision and Urban Design
- Mobility
- Open Space, Conservation and Recreation
- Community Character (Land Use)
- Urban Expansion
- Public Services and Facilities



2A – CIRCULATION/AUTOS



2B - CIRCULATION/TRANSIT



2C - LAND USE

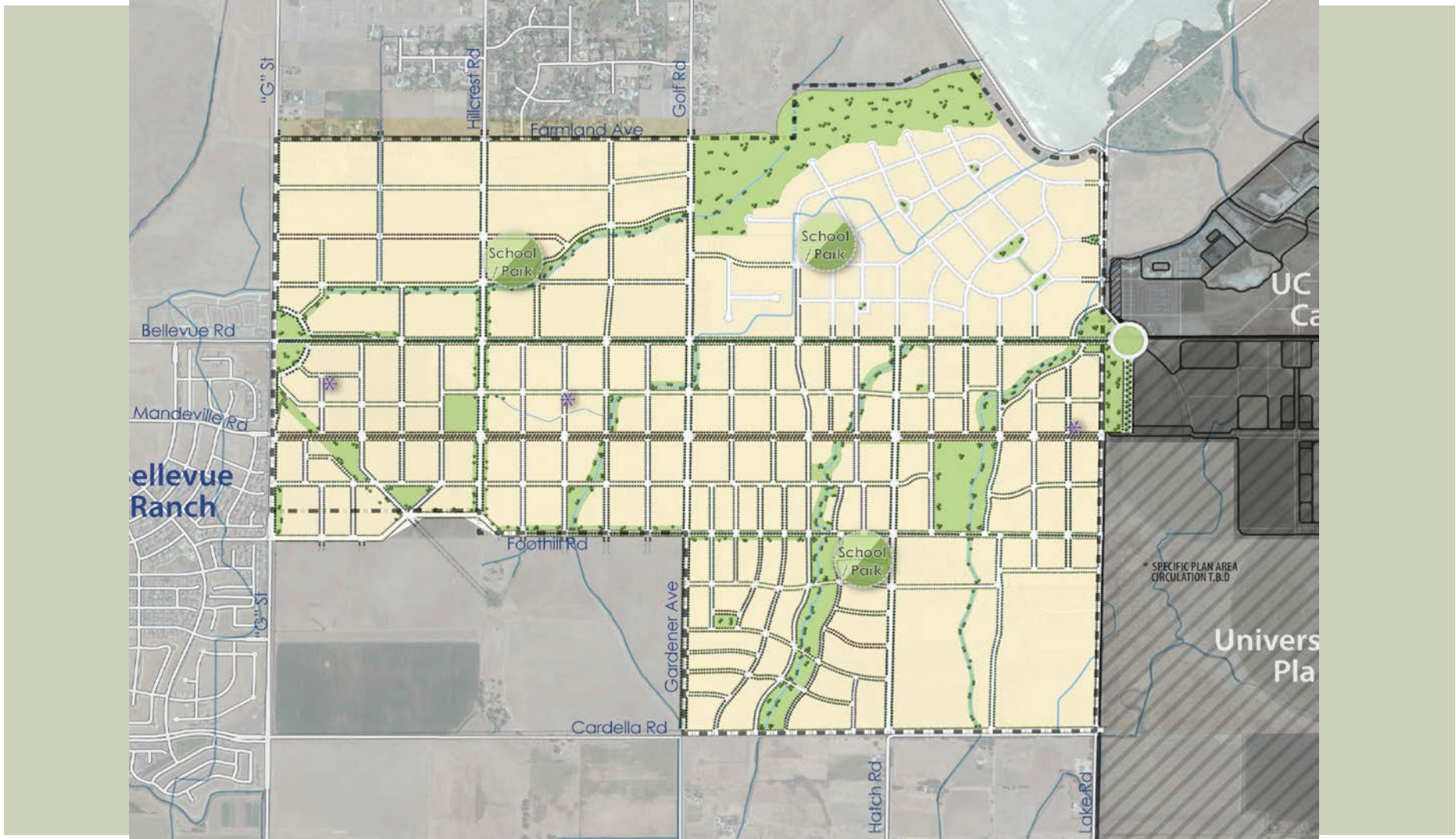


3. RECREATION AND PARKS THEMES

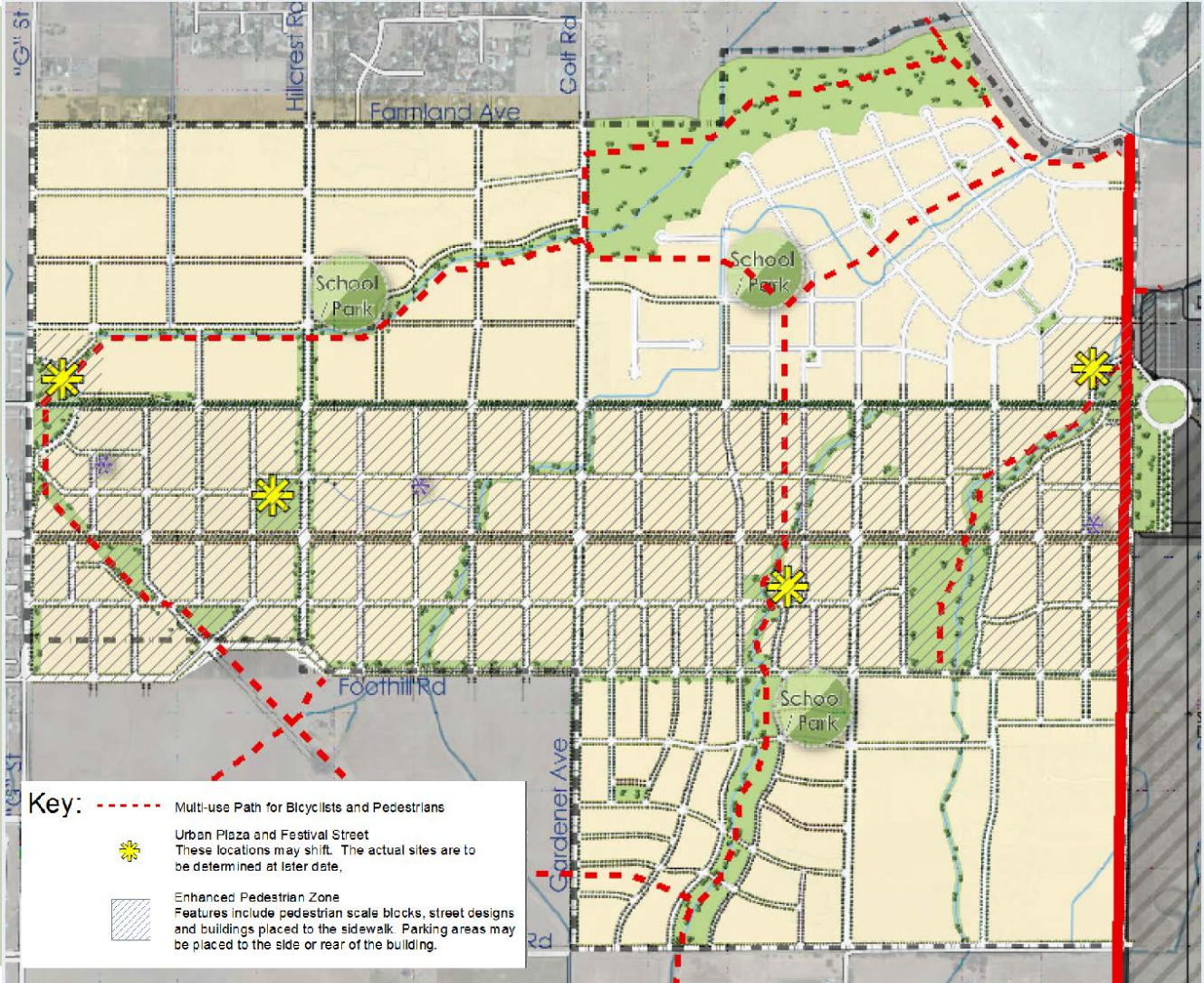
- Parks and Joint-Use Facilities
- Open Space Corridors & Urban Plazas
- Connectivity to Lake Yosemite
- Gateway Streets



3A – PARKS AND JOINT USE FACILITIES

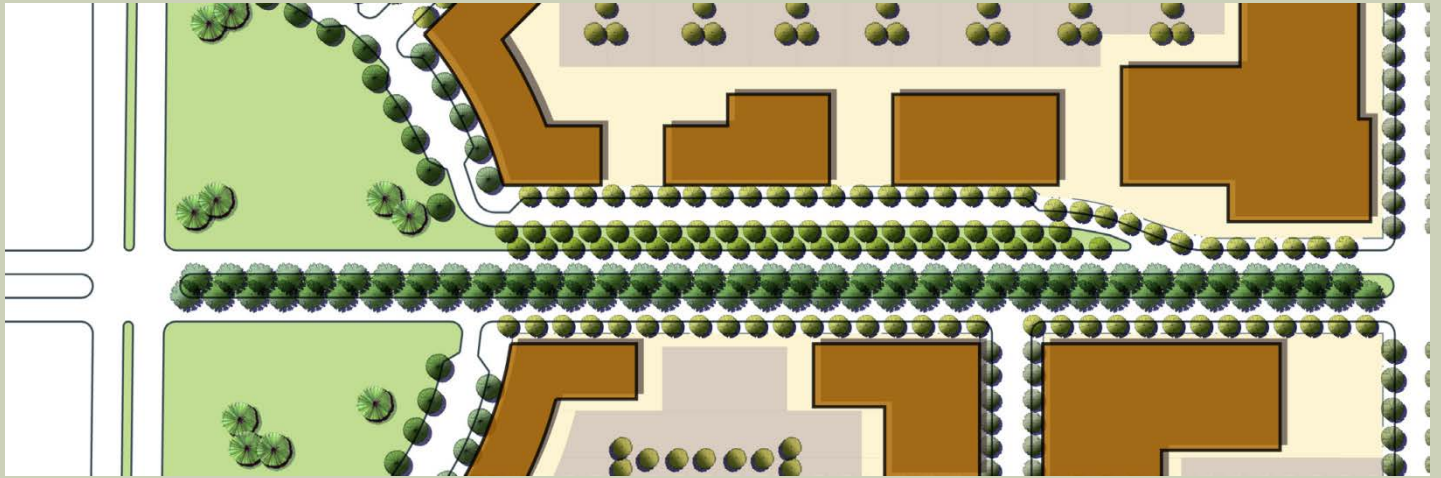


3B - OPEN SPACE CORRIDORS & URBAN PLAZAS



3C. BELLEVUE GATEWAY

BELLEVUE
ROAD:



3D. LAKE ROAD GATEWAY

LAKE ROAD:



4. RECREATION AND PARKS COMMISSION COMMENTS & NEXT STEPS

- 
- **Receive Commission Comments in June 2014**
 - **Final BCP Committee Meeting (Late Summer 2014)**
 - **Preparation of Final Public Review Draft & Environmental Review Documents**
 - **Plan Adoption Public Hearing Process**

QUESTIONS AND COMMENTS?

