



THE CI

MERCED

To: The Honorable Mayor and City Council
From: Steven S. Carrigan, City Manager
Date: July 26, 2019
Re: City Council Information Report

CHANCELLOR LELAND RECEPTION

A reception for Chancellor Dorothy Leland will be held at 5:30 p.m. Mon., Aug. 5 on the Second floor Landing. An invitation is attached.



MERCED 2020 PHASE 2 OPENING

The opening ceremony for the Merced 2020 Phase 2 will be from 6:30 to 8 p.m. Aug. 14 at the Academic Walk Plaza at the UC Merced campus. To RSVP call 209-228-RSVP or chancellor@ucmerced.edu. See attached invitation.

LELAND LEGACY FUND

Information on the Leland Legacy Fund is attached.

INSPECTION SERVICES REPORT

The Inspection Services Report is included again this week because the second page of the report was missing in last week's CI.

SUBSCRIBE MERCED

Subscribe Merced is a new way of informing residents on what's happening in the City of Merced. With Subscribe Merced people can find out about the latest City news, jobs and recreation programs. They can get road closure information delivered to their phone or computer instantly. The latest announcements from the Police and Fire Departments arrive as soon as they are issued. And, there's even more including bids, agendas, and volunteer information. Subscribe Merced rolls out Aug. 1. Information is included in the August newsletter and aired on KYOS Community Conversations. More information on the program is attached.

DOCUMENTARY FILM AT MERCED THEATRE

A film showcasing the 3,000 years of collective life experience of 40 people will be shown at the Merced Theatre at 7 p.m. Fri. Aug. 23, Doors open at 6 p.m. "Lives



Well Lived" is a feature documentary by filmmaker and photographer Sky Bergman. She is a Cal Poly photography and visual arts professor who won awards for the film that highlights the lives and accomplishments of "ordinary" women and men 70 to 100. A flier is attached.

PARKS AND REC UPDATE

Summer Playground Program

Support Services helped the young ones in the Summer Playground Program at Rahilly Park stay cool by supplying popsicles to them. The motto for the program this week has been, “Stay cool!”



Movies in the Park

“Spiderman” was a hit on the big screen and also the little one at McNamara Park. The grass field saw the best attendance of the season for the webbed-wonder’s latest release. And the audience received a special visit from Spidey himself, which drew even more awww’s and applause from the appreciative crowd.



PUBLIC WORKS NEWS

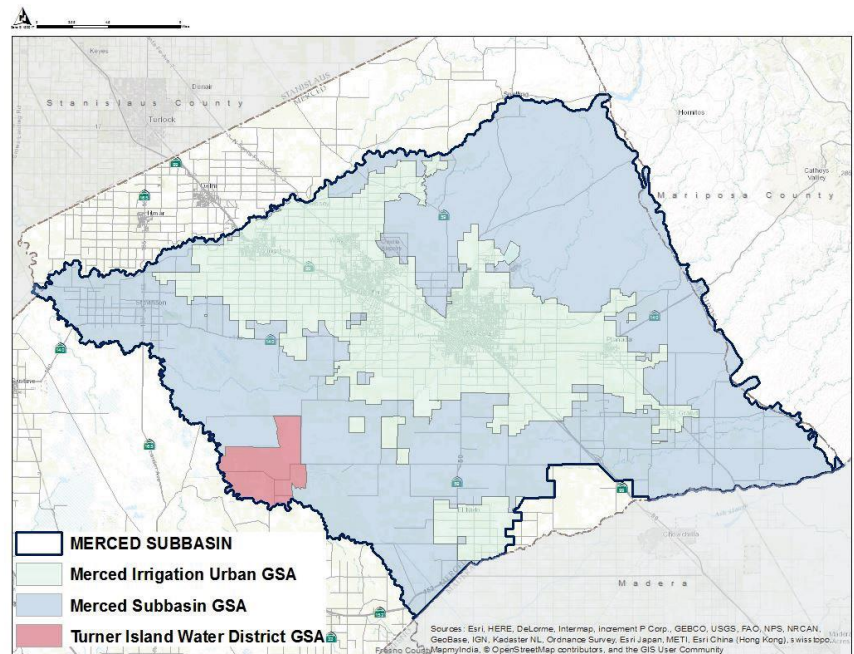
Employee passes away

It is with deep sadness that we announce the sudden loss of one of our fellow Public Works employees, Kevin Ahnen, while off duty. Kevin, who worked in the Fleet Division for close to five years, was a valued employee who will be missed. He leaves behind three children. Please keep them in your thoughts and prayers during this difficult time. Funeral services will be held at 10 a.m., Sat., Aug. 3 at Stratford Evans, 1490 B St. Visitation will be held from 4 to 7 p.m. Fri., Aug. 2 at Stratford Evans.



Draft GSP available for comment

The Draft Groundwater Sustainability Plan (GSP) for Merced Subbasin is now available for public review and comment through Aug. 19. The full document is available online at www.mercedsgma.org. For more information, see attached SGMA news release and the Draft Executive Summary.



BUILDERS FORUM A HIT



The 2019 Builders Forum was held on Wednesday, with approximately 100 people attending. Builders, contractors, developers, and service providers heard about the local market and opportunities. For the first time it was broadcast on Facebook Live. A Builders Forum web page will be created with all the presentations, handouts, and video link. A smaller Builders Roundtable focusing on specific issues and improving services will be held in the Fall. Here is a link to the Builders Forum and the presentations, <https://bit.ly/2YpUi0J>

The speakers were:

- Mayor Mike Murphy, an update on City issues
- Loren Gonella, Coldwell Banker Gonella Realty, local real estate trends
- John Beckman, Greater Valley Building Industry Association, policy issues affecting home development
- Bryan Kroeger, NV5, Campus Parkway update
- Interim City Engineer Michael Beltran, City capital improvement projects
- Joe Allison, Jill Cunningham, Merced College, College Facility Plan update
- Phillip Woods, UC Merced, 2020 Project update
- Steve Carrigan, and City staff, Frank Quintero, Scott McBride and Denise Frazier, update on City development activities



ENGINEERING UPDATE

Transfer Site (Leaf Collection Site)

Rolfe Construction has been onsite this week pouring concrete for the concrete slab that will be used as the transfer station.



Image of Rolfe Construction progress.

Water Well #21

Hobbs Construction has been onsite this week tying steel for the installation of the security block wall that will be placed around the well site.



Images of Hobbs Construction progress.

SAVE THE DATE

Aug. 5 – Chancellor Leland Reception, Second Flood Landing , 5:30 p.m.

Aug. 6 – National Night Out, Applegate Park, 6-8 p.m.

Aug. 14 – Merced 2020 Phase 2 Opening, 6:30-8 p.m. UC Merced

Aug. 23 – Lives Well Lived, Merced Theatre, 7 p.m. Doors open 6 p.m.

Oct. 3 – MCOE Excellence in Education Awards, Merced Theatre, 6:30 p.m.

REPORTS & CORRESPONDENCE

1. Chancellor Leland Reception Invitation	P. 8
2. Merced 2020 Invitation	P. 9
3. Leland Legacy Fund	P. 10
4. Inspection Services Report	P. 11
5. Subscribe Merced information	P. 13
6. Lives Well Lived Flier	P. 14
7. SGMA news release	P. 15
8. SGMA Draft Executive Summary	P. 17
9. Community Profile June 2019	P. 26
10. Business Watch July 2019	P. 30

R E C E P T I O N

*Please join us for refreshments
in honor of*



*Chancellor
Dorothy Leland*



MONDAY, AUGUST 5, 2019
5:30 PM
2ND FLOOR LANDING

The University of California Merced
and the UC Merced Foundation Board of Trustees

request the pleasure of your company at the

MERCED 2020 PHASE 2 OPENING CELEBRATION

Please join us as we celebrate the second delivery of this historic
development project and honor the leadership and accomplishments of

CHANCELLOR DOROTHY LELAND



WEDNESDAY, AUGUST 14, 2019

6:30 PM - 8:00 PM

ACADEMIC WALK PLAZA | UNIVERSITY OF CALIFORNIA MERCED
5200 North Lake Road | Merced, California

For inquiries, please call 209.228.RSVP or email chancellor@ucmerced.edu

RESERVED PARKING AVAILABLE IN THE SCHOLARS PARKING LOT

THE LELAND LEGACY FUND

To celebrate the legacy and achievements of Chancellor Dorothy Leland, the University of California, Merced has established the Leland Legacy Fund benefiting student success initiatives.

Student success has always been at the top of Chancellor Leland's priority list. She has passionately advocated for the funding of classrooms, labs, and support services that foster the academic success of UC Merced students. Primarily coming from low-income families, UC Merced students are often members of underrepresented minority groups and the first in their families to go to college. These are remarkably deserving students, committed not only to their own success but to giving back to their families and communities.

The University invites contributions in support of the Leland Legacy Fund to honor Chancellor Leland's exemplary leadership and passion of ensuring our students' success.

Please respond by August 7 below or online at giving.ucmerced.edu/2020-phase2

I/We joyfully accept

I/We regretfully decline

M _____

Please note any dietary restrictions: _____

I/We would like to make a gift of \$_____ to the Leland Legacy Fund. (Please see reverse side)

First Name: _____ Last Name: _____

Email: _____ Phone: _____

Home Work

Cell Home Work

Address: _____ City: _____ State: _____ Zip: _____

Please make checks payable to: **UC Merced Foundation**

To make your gift by card, please visit: giving.ucmerced.edu/leland-legacy-fund

In accordance with the policy of UC Merced and the UC Merced Foundation, a modest portion of the gift principal and/or income may be used to partially defray the costs to raise and administer funds.

Inspection Services CI

For the period of July 1st through July 14th, 2019, there were 26 New Single Family Dwelling Permits Issued.

The running total of New Single Family Dwellings in Plan Review is **115**.

Multi Family Permits in review:

Gateway Terrace Apartments located at 405 W 12th St, 1 Office/Lounge and 6, 2 story Apartments; 2 buildings have 16 units, 3 buildings have 30 units, and 1 building has 4 units.

Yosemite at Lake Apartments located at 2850 E. Yosemite Ave.; 15- 27,276 SF 3-story apartment buildings each with 15 units, and a 1,200 SF maintenance building.

Compass Pointe phase II: 128 units in 16, 8-plex buildings plus a clubhouse.

There were 0 multi-family permits issued during this period.

(No change since last report)

There was 1 new construction commercial permit issued during this period; for a 16,000 SF industrial warehouse for Titan Metal Doors and Windows located at 1891 Wardrobe Ave.

There were 2 new tenant improvement permits issued during this period; one for a reconfiguration of the apparel department at Walmart located at 3055 Loughborough Dr., and one for a façade upgrade for the new Planet Fitness located at 3155 R St.

There was 1 new commercial submittal during this period; for a 320 SF refrigerated container at 1425 Martin Luther King Jr. Wy.

There was 1 new tenant improvement submittal during this period; for a 3,650 SF tenant improvement for La Michoacana USA ice cream shop located at 1111 W Olive Ave B.

There were 2 CofOs issued for this period; one to combine individual offices into an executive suite at 368 E. Yosemite Ave. #200, and one for a 1,055 SF I.T. and communications building for the PG&E complex located at 4155 E. Childs Ave.

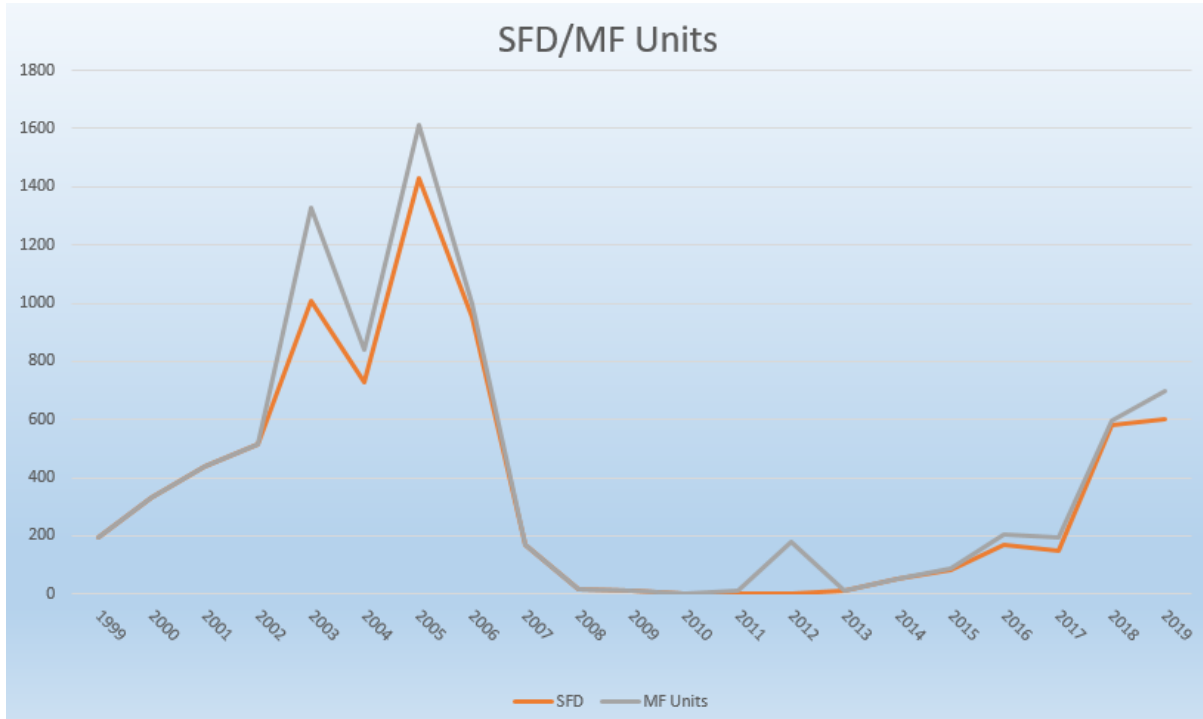
In Fiscal Year 2017/18 the city issued 500 single family dwelling permits. This fiscal year we issued 531 SFD permits!

In Fiscal Year 2017/18 the city issued 2,974 building permits. This fiscal year we issued 3,301 total building permits!



For the 2019 calendar year thus far we have issued 1,942 building permits, which is the second year in a row that we are on track to meet or exceed our highest recorded permit year- 2006 at 3,663 total permits.

These charts are for the calendar years, with the second half of 2019 estimated based off of current numbers and last year's growth;

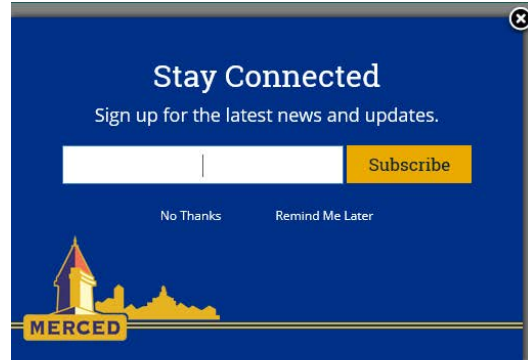


Subscribe Merced Online Tool Launching August 1st

What is it Subscribe Merced and what will it do?

Subscribe Merced is a community outreach tool for citizens to subscribe and select from the various topics that interest them to be kept informed by the City. With this new tool citizens pick the topics that interest them and will be sent information on regular basis on these topics. Topics include Job Announcements, BIDS/RFP Announcements, News & Announcements, Parks and Youth Events, Volunteer Opportunities, Boards & Commissions, Council Agendas, Fire Department Announcements, Police Department Announcements, Road Closures & Emergency Water Break. This allows the City to keep citizens more informed on various Topic's that Citizen's subscribe to.

How to Enroll: A pop-up will appear on the City home page starting on August 1st.



Outreach: The double-sided English/Spanish Flyer below will go out in the Utility Bill on August 1st and 15th along with social media outreach.



Subscribe Merced

The Newest Way to Stay Connected With Your City


Subscribe Merced, the latest way to receive news and information from the City of Merced by e-mail or text message. The FREE subscriber page allows you to choose the topics you are interested in, so you can stay up-to-date on what is most important to you.

Some of the City topics include:

News and Announcements	Parks and Recreation Information
City Jobs	Bid Opportunities
Boards and Commissions	Road Closures

Are ready to subscribe? Go to the City's web page at www.cityofmerced.org or scan the barcode with your smartphone.





Subscribe Merced


La manera más nueva de estar conectado con tú ciudad

Subscribe Merced, la manera más nueva de recibir noticias e información de la ciudad de Merced por e-mail o mensaje de texto. La pagina GRATIS de subscriber te permitira escoger los temas en los que estes interesado para que puedas estar informado de lo último y que es importante para ti.

Algunos de los temas incluyen:

Noticias y avisos	Información de Parques y Recreación
Trabajos de la ciudad	Oportunidades de Oferta
Cosejos y comisiones	Calles cerradas

Estás listo para suscribirte? Ve a la pagina de internet de la ciudad al www.cityofmerced.org o escanea el código de barras con tu telefono inteligente.





A film by Sky Bergman



LIVES WELL LIVED

Celebrating the Secrets, Wit and Wisdom of Age

“A warm, uplifting and enlightening feast for the heart, mind and soul.”

— NYC MOVIE GURU



40 people. 3000 years of collective life experience.

Time: 7 p.m. (Doors open at 6 p.m.)
Date: Friday, August 23, 2019
Location: The Merced Theatre - 301 West Main Street, Merced, CA 95340
Ticket Info: Contact Susie Fagalde at (209) 385-3000, Extension 3119, or sfagalde@hsa.co.merced.ca.us
Sponsor: Merced County Human Services Agency and the Area Agency on Aging



Lives Well Lived | lives-well-lived.com

For Immediate Release

July 22, 2019

Contact for more information:

- Mike Jensen, Merced Irrigation-Urban Groundwater Sustainability Agency, 209-354-2856
mjensen@mercedid.org
- Mike North, County of Merced, Merced Subbasin Groundwater Sustainability Agency 209-726-2744,
MNorth@co.merced.ca.us
- Larry Harris, Turner Island Water District Groundwater Sustainability Agency, 209-827-7700 TIWD-GSA-1@wolfseninc.com

Draft of Groundwater Sustainability Plan for Merced Subbasin Available for Public Review and Comment

Over the past 18 months, the three Groundwater Sustainability Agencies (GSAs) in the Merced Subbasin have worked together to develop a Draft Groundwater Sustainability Plan (GSP) that is now available for public review and comment. The three GSAs are as follows:

1. Merced Subbasin Groundwater Sustainability Agency (MSGSA)
2. Merced Irrigation-Urban Groundwater Sustainability Agency (MIUGSA)
3. Turner Island Groundwater Sustainability Agency (TIWDGSA-1)

The Draft GSP is available for public review and comment for a 30-day public comment period, from July 19 through August 19.

Where to Review the Draft GSP

The full document will be available as follows:

1. Online at www.mercedsgma.org
2. Hardcopies are available at the following public locations:
 - Merced Public Library, 2100 O St, Merced, CA 95340
 - Le Grand Branch Library, 12949 Le Grand Rd, Le Grand, CA 95333
 - Atwater Branch Library, 1600 Third St, Atwater, CA 95301
 - Winton Branch Library, 7057 Walnut Ave, Winton, CA 95388
 - Livingston Public Library, 1212 Main St, Livingston, CA 95334
 - Planada Community Services District, 103 Live Oak St, Planada, CA 95365
 - MSGSA – County of Merced, Community and Economic Development, Front Counter, 2222 M Street, Merced, CA 95341
 - MIUGSA – Merced Irrigation District, 744 W. 20th Street, Merced, CA 95340
 - TIWDGSA-1 – 1269 West I Street, Los Banos, CA 93635

Ways to Submit Public Comments by August 19, 2019

Comments on the Draft GSP can be submitted by mail or email to:

Email: mercedsgma@woodardcurran.com

U.S. Mail: Hicham Eltal, Merced GSP Contact, Merced Irrigation District, 744 W 20th St., Merced, CA 95340

Next Steps

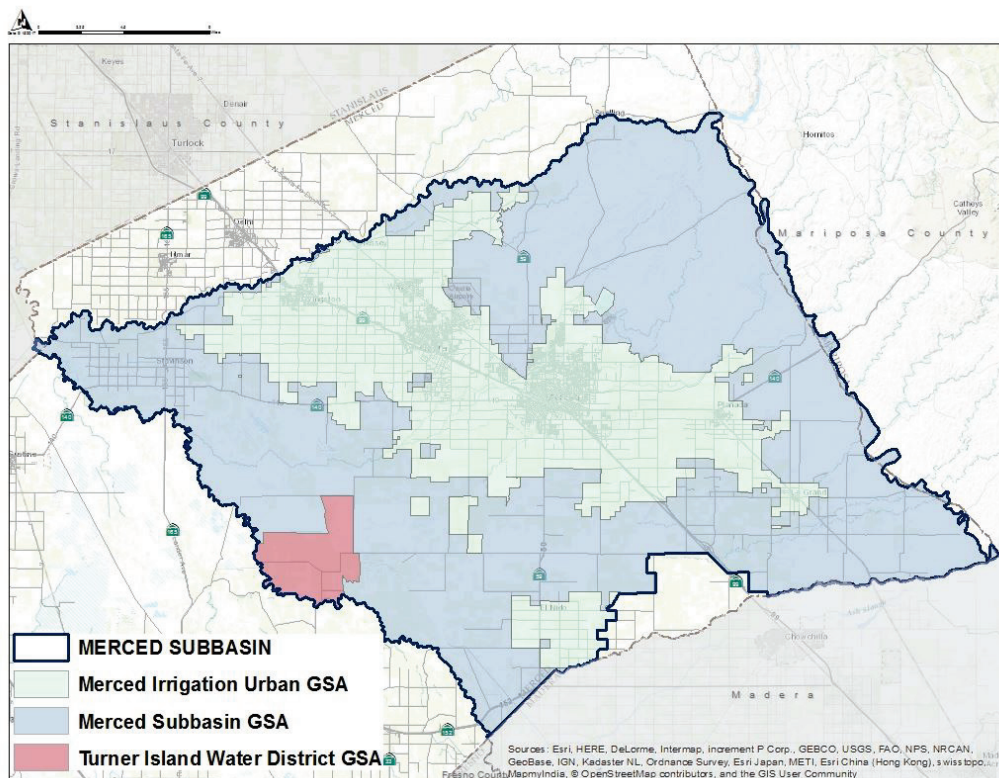
Notice of Intent to Adopt GSP: The three GSAs will provide notice to the cities and counties within the geographic area covered by the Merced Subbasin GSP of each GSA's intent to adopt the GSP no earlier than 90-days from the notice.

Joint Meeting of 3 GSA Boards: After the close of the 30-day public comment period on August 19, 2019, the comments will be reviewed by the GSAs. The public comments received will be discussed at a joint public meeting of the GSAs in September (meeting time and location to be posted at www.mercedsgma.org once finalized).

Adoption Hearings to be Held in Fall 2019: In accordance with California Water Code Section 10728.4, consideration to adopt the jointly developed Merced Subbasin GSP will occur as part of public hearings to be held by the three GSAs. Meeting times and locations will be posted at www.mercedsgma.org when finalized. Once adopted, the Merced Subbasin GSP will govern sustainable groundwater management actions within each GSA's jurisdictional boundaries located in the Merced Subbasin.

Submittal to DWR

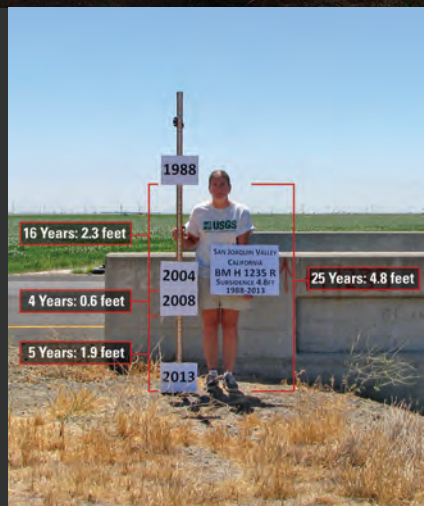
The three GSAs will jointly submit the final GSP to the California Department of Water Resources (DWR) for review and approval by the January 31, 2020 regulatory deadline.



Merced Groundwater Subbasin
**GROUNDWATER
SUSTAINABILITY PLAN**

Draft Report — Executive Summary

Image courtesy: Veronica Adrover/UC Merced



EXECUTIVE SUMMARY

ES-1. INTRODUCTION AND PLAN AREA

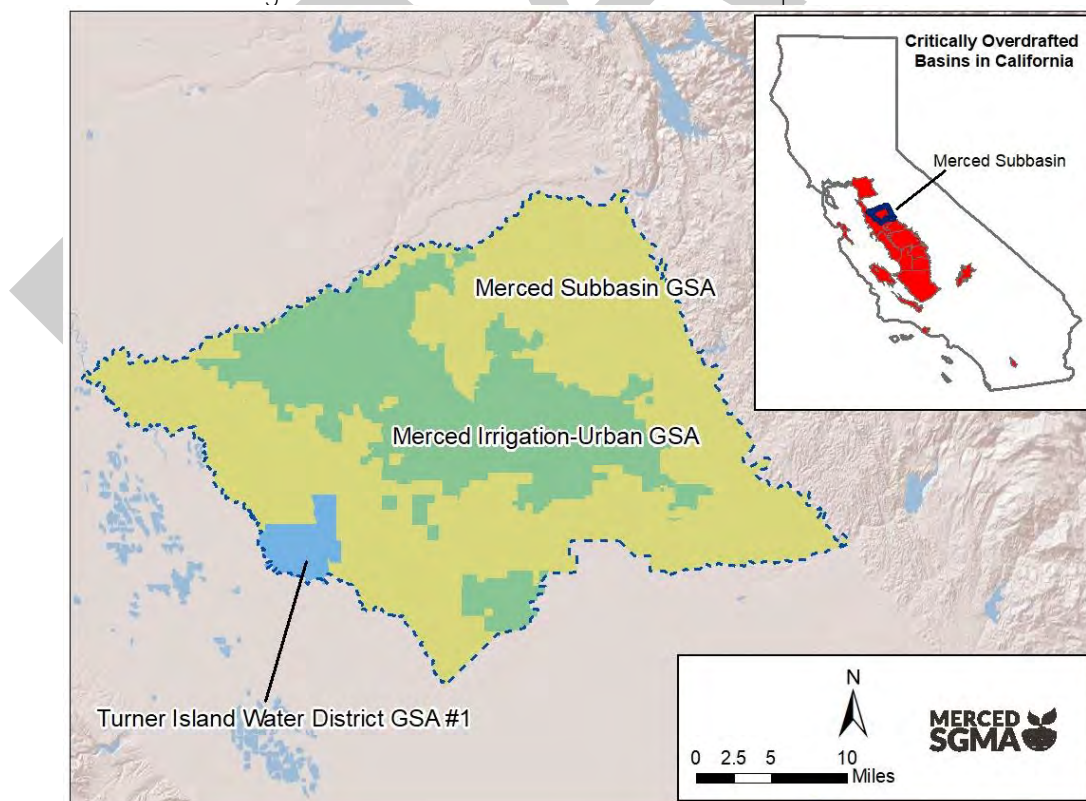
The Sustainable Groundwater Management Act (SGMA), passed in 2014, requires the formation of local Groundwater Sustainability Agencies (GSAs) to oversee the development and implementation of Groundwater Sustainability Plans (GSPs), with the ultimate goal of achieving **sustainable management of the State's groundwater** basins. The purpose of this Groundwater Sustainability Plan is to bring the Merced Groundwater Basin (Merced Subbasin), a critically overdrafted basin located within the San Joaquin Valley (see Figure ES-1), into sustainable groundwater management by 2040. The Subbasin is heavily reliant on groundwater, and users recognize the basin has been in overdraft for a long period of time.

The County of Merced and water districts and cities within the Merced Subbasin formed three GSAs in accordance with SGMA: Merced Irrigation-Urban Groundwater Sustainability Agency (MIUGSA), Merced Subbasin Groundwater Sustainability Agency (MSGSA), and Turner Island Water District Groundwater Sustainability Agency #1 (TIWD GSA-1) (see Figure ES-1). The three GSAs coordinated efforts to develop this GSP for the Subbasin. With the adoption of this GSP, the GSAs will adopt the following sustainability goal for the Merced Subbasin:

“Achieve sustainable groundwater management on a long-term average basis by increasing recharge and/or reducing groundwater pumping, while avoiding undesirable results.”

This goal will be achieved by allocating a portion of the estimated Subbasin sustainable yield to each of the three GSAs and coordinating the implementation of programs and projects to increase both direct and in-lieu groundwater recharge, which will in turn increase the groundwater and / or surface water available in the Subbasin.

Figure ES-1: Merced Subbasin Location Map and GSAs



Development of the GSP was guided by a Coordinating Committee composed of members appointed by the GSA Boards to provide recommendations on technical and substantive basin-wide issues. The Coordinating Committee and GSA Boards were also informed by a Stakeholder Advisory Committee, which consisted of a broad group of groundwater beneficial users (also appointed by the GSA Boards) to review groundwater conditions, management issues and needs, and projects and management actions to improve sustainability in the basin. Extensive outreach was also conducted to seek input from additional beneficial users of groundwater through multiple venues including public workshops held in locations specifically selected to provide access to disadvantaged communities. Figure ES-2 illustrates the relationship among the groups described above.

Figure ES-2: Diagram of Levels of Engagement and Decision-Making

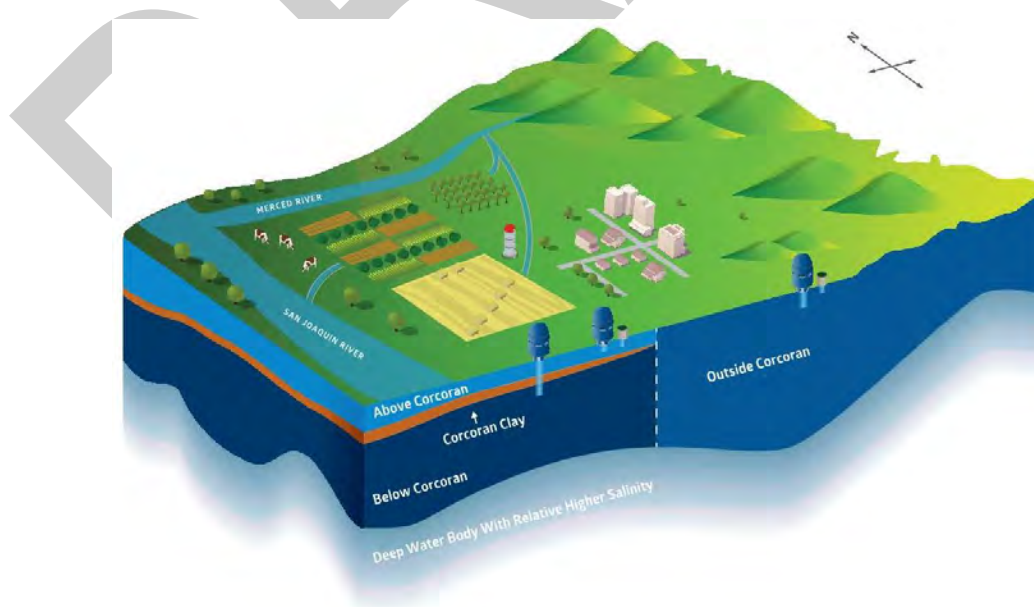


ES-2. BASIN SETTING

Hydrogeologic Conceptual Model

The Merced Subbasin contains three principal aquifers that are defined by their relationship to the Corcoran Clay aquitard, a laterally-extensive silt and clay layer that underlies about half of the western portion of the Subbasin and acts as a significant confining layer. The Above Corcoran Principal Aquifer includes all aquifer units that exist above the Corcoran Clay Aquitard and generally contains moderate to large hydraulic conductivities and yields for domestic and irrigation uses. The Below Corcoran Principal Aquifer includes all aquifer units that exist below the Corcoran Clay Aquitard and contains hydraulic conductivities and yields ranging from small to large for irrigation as well as some domestic and municipal uses. The Outside Corcoran Principal Aquifer includes all aquifers that exist outside of the eastern lateral extent of the Corcoran Clay. The Outside Corcoran Principal Aquifer is connected laterally with the Above Corcoran Principal Aquifer at shallower depths and the Below Corcoran Principal Aquifer at deeper depths. Major uses of water in the Outside Corcoran Principal Aquifer include irrigation, domestic, and municipal uses. The Principal Aquifers are underlain by a deep water body with higher salinity relative to the principal aquifers. See Figure ES-3 for a 3D illustration demonstrating the relationship between the principal aquifers and Corcoran Clay aquitard

Figure ES-3: 3D Illustration of Merced Subbasin Principal Aquifers and Aquitard



Water Budget Information

Water budgets provide quantitative accounting of water entering and leaving the Merced Subbasin and can be used to help estimate the extent of overdraft occurring now and in the future. Consistent with SGMA requirements, water budgets for historical, current, projected, and sustainable conditions were developed for the Merced Subbasin. These water budgets were developed using the Merced Water Resources Model (MercedWRM), a fully integrated surface and groundwater flow model developed and calibrated specifically for the Subbasin. See Figure ES-4 for a conceptual diagram of the inputs and outputs quantified by the model. The historical conditions water budget (see Figure ES-5) shows an annual average rate of overdraft (“Change in Storage”) of 192,000 acre-feet per year (AFY) over Water Years 1996 through 2015. In this Figure, the “Change in Storage” represents the average annual decline in storage resulting from the Subbasin outflows, principally groundwater pumping.

Figure ES-4: Generalized Water Budget Diagram

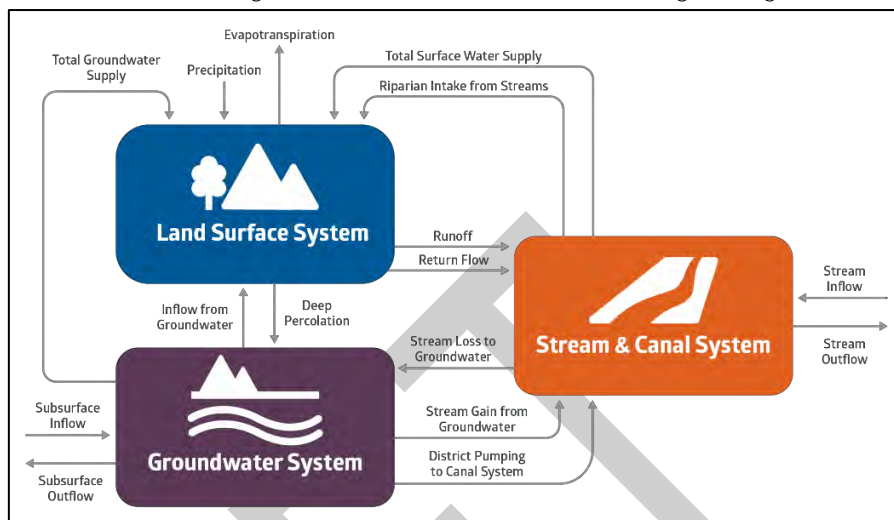
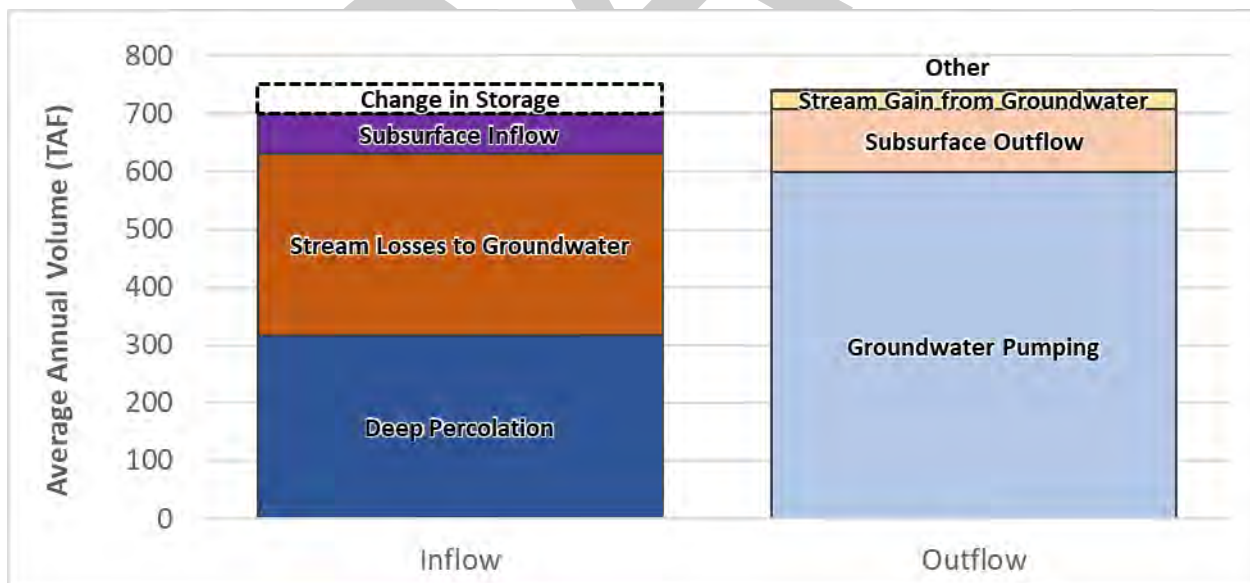


Figure ES-5: Historical Conditions Water Budget

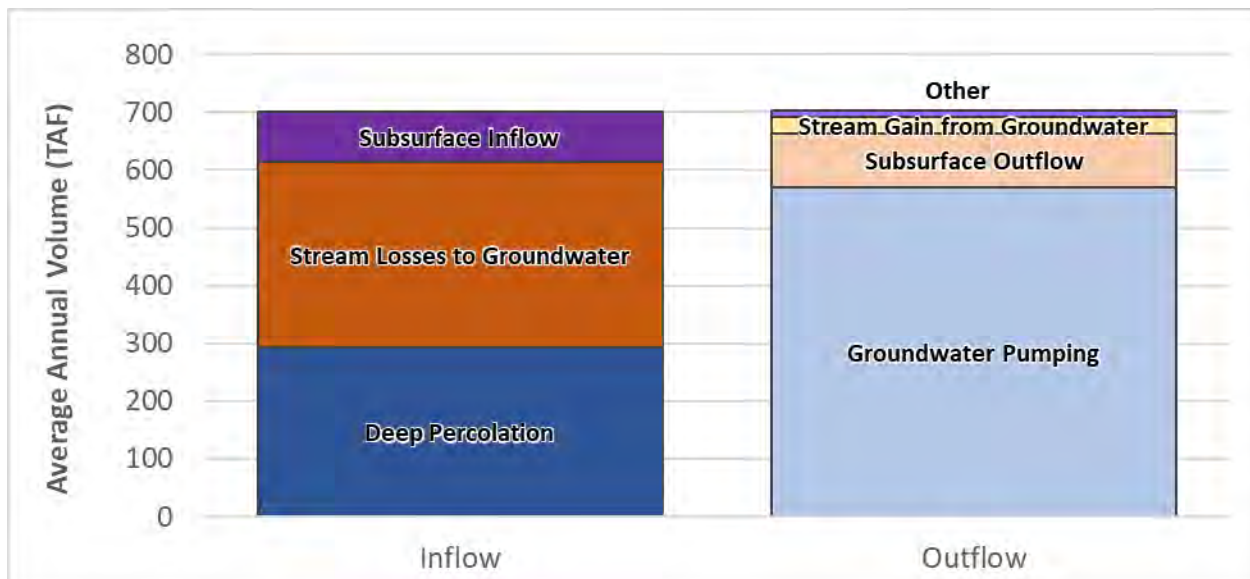


SGMA defines sustainable yield as “the maximum quantity of water, calculated over a base period representative of long-term conditions in the basin and including any temporary surplus, that can be withdrawn annually from a groundwater supply without causing an undesirable result” (California Water Code §10721(w)).

For the Merced Subbasin, sustainable yield was estimated by modifying conditions in the groundwater model to balance out the change in stored water over time. In order to achieve a net-zero change in groundwater storage over a long-term

average condition, current agricultural and urban groundwater demand in the Merced Subbasin would need to be reduced by approximately 10 percent, absent implementation of any new supply-side or recharge projects. Figure ES-6 illustrates the Subbasin water budget under long term sustainable conditions.

Figure ES-6: Groundwater Water Budget under Sustainable Groundwater Management Conditions
Long-Term (50-Year) Average Annual









ES-3. SUSTAINABLE MANAGEMENT CRITERIA

SGMA requires consideration of six sustainability indicators. For each indicator, the GSP must define undesirable **results for the basin** (“**significant and unreasonable**” negative impacts) and determine if they could occur. For the indicators with the potential for undesirable results, the GSP must establish sustainable management criteria that are intended to prevent undesirable results from occurring and establish a monitoring network.

Sustainable management criteria were developed to be protective of beneficial uses in the Merced Subbasin and to **support the Subbasin’s sustainability goal. Demonstration by 2040 of stable groundwater elevations on a long-term average basis, combined with the absence of undesirable results, will support a determination that the basin is operating within its sustainable yield, and thus that the sustainability goal has been achieved.**

A summary of the sustainable management criteria for the Merced Subbasin is shown in Table ES-1.

Table ES-1: Summary of Sustainable Management Criteria

Sustainability Indicator	Minimum Threshold (MT)	Measurable Objective	Undesirable Result
 Groundwater Levels	Depth of shallowest well in a 2-mile radius of each representative well or minimum pre-January 1, 2015, elevation	Projected average future groundwater level under sustainable yield modeling simulation	Greater than 25% of representative wells fall below MT in 2 consecutive wet, above normal, or below normal years
 Groundwater Storage	N/A - not present and not expected to occur in the Subbasin due to the significant volumes of freshwater in storage		
 Sea Water Intrusion	N/A - not present and not expected to occur due to the distance between the Subbasin and the Pacific Ocean (and Sacramento-San Joaquin Delta)		
 Degraded Water Quality	1,000 mg/L TDS	500 mg/L TDS	At least 25% representative wells exceed MT for 2 consecutive years
 Land Subsidence	-0.75 ft/year	-0.25 ft/year	Exceedance of MT at 3 or more representative sites for 2 consecutive years
 Depletions of Interconnected Surface Waters	Groundwater levels used as a proxy for this sustainability indicator		

There are two sustainability indicators deemed not applicable to the Merced Subbasin. Undesirable results related to significant and unreasonable depletions of groundwater storage are not present and not expected to occur in the Subbasin, since historical reductions have been insignificant relative to the total volume of freshwater water storage in the Subbasin. Seawater intrusion is not an applicable sustainability indicator because seawater intrusion is not present and is not expected to occur due to the distance between the Subbasin and the Pacific Ocean (and Sacramento-San Joaquin Delta).

For the remaining sustainability indicators, sustainable management criteria were established to be protective of Subbasin beneficial uses as described below.

Minimum thresholds for declining groundwater levels were developed based on records of well depth for the shallowest domestic wells within a 2-mile radius of each representative monitoring well, since domestic wells are generally shallower than agricultural and municipal wells and are thus more protective for setting thresholds. Sustainable management criteria for declining groundwater levels were developed with a robust dataset including **historical groundwater levels, Merced County's domestic well permitting database, and simulated groundwater levels** from the MercedWRM. Groundwater levels are being used as a proxy indicator for depletion of interconnected surface waters.

Degraded water quality is unique among the six sustainability indicators because it is already the subject of extensive federal, state, and local regulations carried out by numerous entities, and SGMA does not directly address the role of

GSA relative to these other entities (Moran & Belin, 2019). SGMA does not specify water quality constituents that must have minimum thresholds. Groundwater management is the mechanism available to GSAs to implement SGMA. Establishing minimum thresholds for constituents that cannot be managed by increasing or decreasing pumping was deemed inappropriate by the GSAs and basin stakeholders. The major water quality issue being addressed by sustainable groundwater management is the migration of relatively higher salinity water into the freshwater principal aquifers. The nexus between water quality and water supply management exists for the pumping-induced movement of low-quality water from the west and northwest to the east. Other water quality concerns are being addressed through various water quality programs and agencies that have the authority and responsibility to address them.

Within the Merced Subbasin, while land subsidence has been recognized by the GSAs as an area of concern, it is not considered to have caused a significant and unreasonable reduction in the viability of the use of infrastructure. However, it is noted that subsidence has caused a reduction in freeboard of the Middle Eastside Bypass over the last 50 years and has caused problems in neighboring subbasins, highlighting the need for ongoing monitoring and management in the Merced Subbasin. Thus, sustainable management criteria were established based on historical rates of subsidence in the Subbasin.

Depletions of interconnected surface waters will be managed using groundwater levels as a proxy due to the challenges associated with directly measuring streamflow depletions and because of the significant correlation between groundwater levels and depletions.

ES-4. MONITORING NETWORKS

Consistent with SGMA requirements, the GSAs plan to establish monitoring networks for each sustainability indicator to monitor trends in the Subbasin and evaluate GSP implementation against sustainable management criteria. The groundwater monitoring network consists of wells from the California Statewide Groundwater Elevation Monitoring (CASGEM) program that were selected to provide representative conditions for groundwater levels across the Subbasin. The groundwater quality network includes a combination of wells in the Subbasin that are part of the East San Joaquin Water Quality Coalition Groundwater Quality Trend Monitoring Program as well as Public Water System wells that report data to the Division of Drinking Water. The subsidence monitoring network relies on control points monitored by the United States Bureau of Reclamation as part of the San Joaquin River Restoration Program. While the monitoring networks reflect a robust history of monitoring Subbasin conditions, data gaps still exist and plans to fill these data gaps for each sustainability indicator are also described in this plan.

ES-5. DATA MANAGEMENT SYSTEM

The Merced Subbasin Data Management System (DMS) was developed to serve as a data sharing portal to enable utilization of the same data and tools for visualization and analysis to support sustainable groundwater management and transparent reporting of data and results. Monitoring data can be manually input by users or batch uploaded via template and is expected to include (but is not limited to) groundwater elevation, groundwater quality, streamflow, and subsidence. All monitoring locations can be viewed spatially (map or list format) and data records per site can be viewed temporally (chart or list format). Ad-hoc queries and standard reports will greatly assist in answering questions about basin characterization, providing input for decision-making, and developing reports to meet annual report submittal requirements.

ES-6. PROJECTS AND MANAGEMENT ACTIONS TO ACHIEVE SUSTAINABILITY GOAL

SGMA requires that GSPs describe the projects and management actions to be implemented as part of bringing the Subbasin into sustainability. The primary means for achieving sustainability in the basin will be implementation of an allocation framework to allocate the sustainable yield of the basin to the GSAs. A water allocation framework has been

the subject of much discussion during GSP development. The GSAs have agreed that they intend to allocate water to each GSA but have not yet reached agreement on allocations or how they will be implemented.

The GSP identifies a shortlist of 12 priority projects that met a series of screening criteria for implementation (see Table ES-2) as well as a longer list of possible future projects that were identified during GSP development. Projects and management actions will either increase surface water supplies to augment the sustainable groundwater yield or will increase groundwater recharge, which will in turn increase the amount of groundwater that may be sustainably used.

Table ES-2: Projects Shortlist for Merced Subbasin Groundwater Sustainability Plan*

Project Name	Current Status	Expected Completion	Estimated Cost
Project 1: Planada Groundwater Recharge Basin Pilot Project	Planning, to be implemented with DWR Grant Funding	12/17/2023	\$395,292
Project 2: El Nido Groundwater Monitoring Wells	Planning, to be implemented with DWR Grant Funding	12/31/2019	\$400,000
Project 3: Meadowbrook Water System Intertie Feasibility Study	Planning	06/2020	\$100,588
Project 4: Merquin County Water District Recharge Basin	Planning/Initial Study	12/15/2021	\$1,400,000
Project 5: Merced Irrigation District to Lone Tree Mutual Water Company Conveyance Canal	Conceptual	11/2020	\$3-6,000,000
Project 6: Merced IRWM Region Climate Change Modeling	Design	4/30/2021	\$250,000
Project 7: Merced Region Water Use Efficiency Program	Design	12/31/2020	\$500,000
Project 8: Merced Groundwater Subbasin LIDAR	Planning/Initial Study	12/2020	\$150,000
Project 9: Study for Potential Water System Intertie Facilities from MID to LGAWD and CWD	Design Complete	06/01/2020	\$100,000
Project 10: Vander Woude Dairy Offstream Temporary Storage	Planning/Initial Study & Conceptual Design	05/2020	\$750,000
Project 11: Mini-Big Conveyance Project	Planning	06/2026	\$ 6-8,000,000
Project 12: Streamlining Permitting for Replacing Sub-Corcoran Wells	Planning	1/31/2020	\$75,000

*Information provided by project proponents.

ES-7. PLAN IMPLEMENTATION

Implementation of the GSP will be a substantial undertaking that will include implementation of the projects and management actions as well as GSAs administration, public outreach, implementation of the monitoring programs and filling data gaps, development of annual reports, and development of a 5-year update and report. The GSAs have developed an implementation schedule (see Table ES-3) and estimated costs for all activities, as well as potential funding mechanism options. Implementation of the GSP is projected to run between \$1.2M and \$1.6M per year. Costs for projects and management actions are estimated to be an additional \$22.9M in total, with costs for individual projects or management actions ranging between \$75K to \$8M in total.

Table ES-3: GSP Implementation Schedule

2020	2025	2030	2035	2040
Monitoring and Reporting	Preparation for Allocations and Low Capital Outlay Projects	Prepare for Sustainability	Implement Sustainable Operations	
<ul style="list-style-type: none"> Establish Monitoring Network Install New Groundwater Wells Reduce/Fill Data Gaps 	<ul style="list-style-type: none"> GSA's conduct 5-year evaluation/update Monitoring and reporting continue 	<ul style="list-style-type: none"> GSA's conduct 5-year evaluation/update Monitoring and reporting continue 	<ul style="list-style-type: none"> GSA's conduct 5-year evaluation/update Monitoring and reporting continue 	
<ul style="list-style-type: none"> GSA's allocated initial allocations GSA's establish their allocation procedures and demand reduction efforts Develop Metering Program 	<ul style="list-style-type: none"> As-needed demand reduction to reach Sustainable Yield allocation Metering program continues 	<ul style="list-style-type: none"> As-needed demand reduction to reach Sustainable Yield allocation 	<ul style="list-style-type: none"> Full implementation demand reduction as needed to reach Sustainable Yield allocation by 2040 	
<ul style="list-style-type: none"> Funded and smaller projects implemented 	<ul style="list-style-type: none"> Planning/ Design/ Construction for small to medium sized projects 	<ul style="list-style-type: none"> Planning/ Design/ Construction for larger projects begins 	<ul style="list-style-type: none"> Project implementation completed 	
<ul style="list-style-type: none"> Extensive public outreach regarding GSP and allocations 	<ul style="list-style-type: none"> Outreach regarding GSP and allocations continues 	<ul style="list-style-type: none"> Outreach continues 	<ul style="list-style-type: none"> Outreach continues 	

May 2019

CITY OF MERCED

Office of Economic Development
678 W. 18th Street, Merced CA, 95340

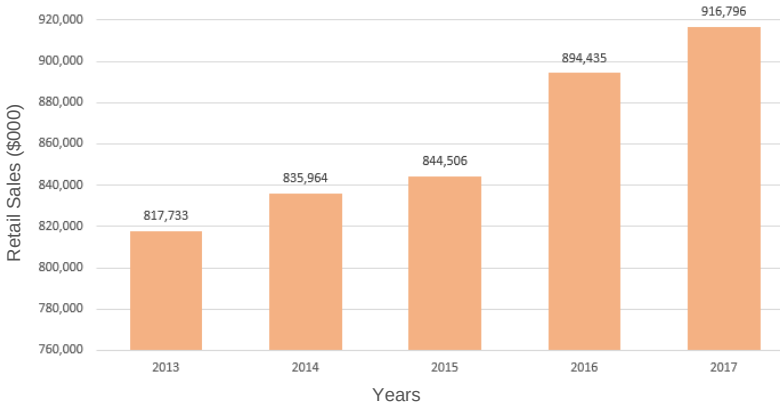
Frank Quintero:
209.385.6826 (D)
209.564.0582 (M)

Maria Mendoza:
209.385.6970 (D)
209.617.5982 (M)

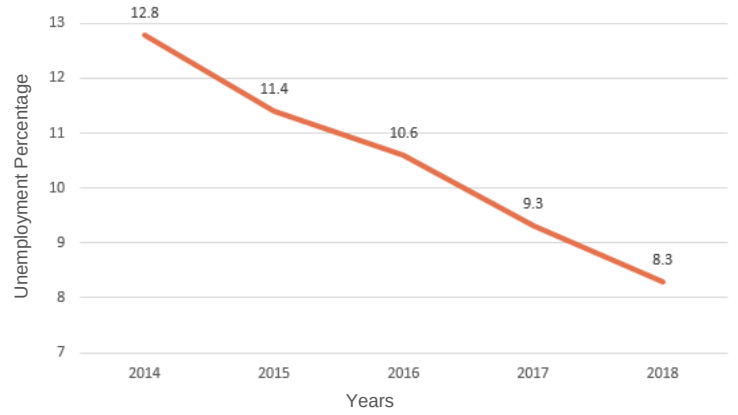


CITY OF MERCED

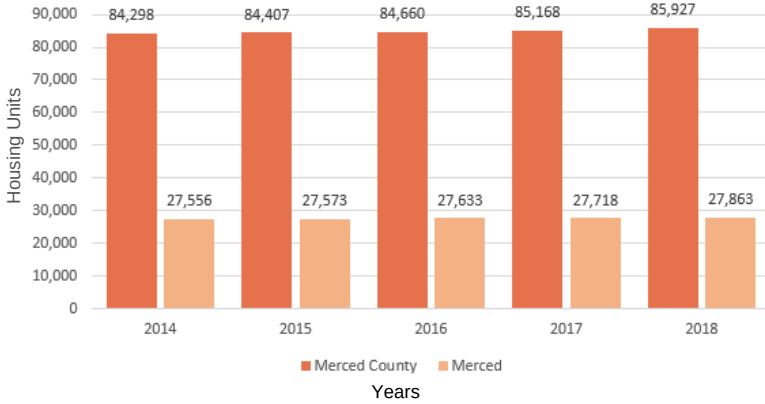
Retail Sales Total (\$000)



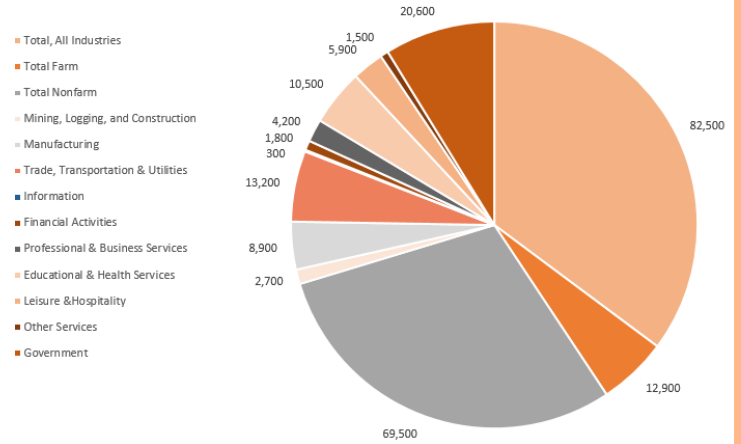
Average Annual Unemployment Rate



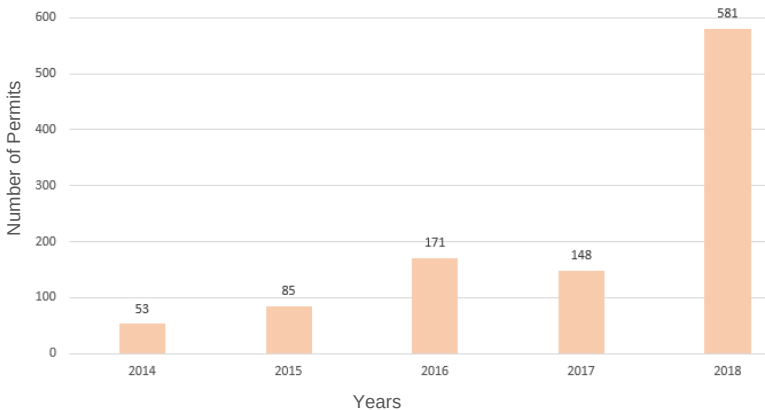
Total Housing Units



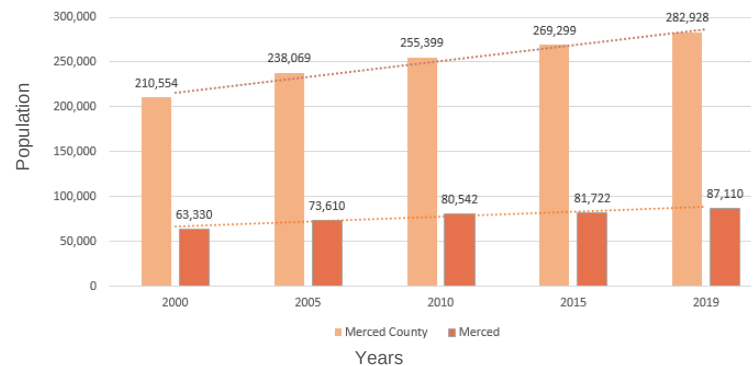
Labor Force- April, 2019



Issued Building Permits Per Year New Single Family Dwellings



Merced Population



May 2019

CITY OF MERCED

Office of Economic Development
678 W. 18th Street, Merced CA, 95340

Frank Quintero:
209.385.6826 (D)
209.564.0582 (M)

Maria Mendoza:
209.385.6970 (D)
209.617.5982 (M)

Top 3 Hotels (Number of Rooms)

- Courtyard Marriot **90**
- Town Place Suites **87**
- Holiday Inn **91**
- Total number of hotel rooms **1,174**

Parks

- Mini Parks **15**
- Neighborhood Parks **14**
- Community Parks **4**
- Regional Parks **3**

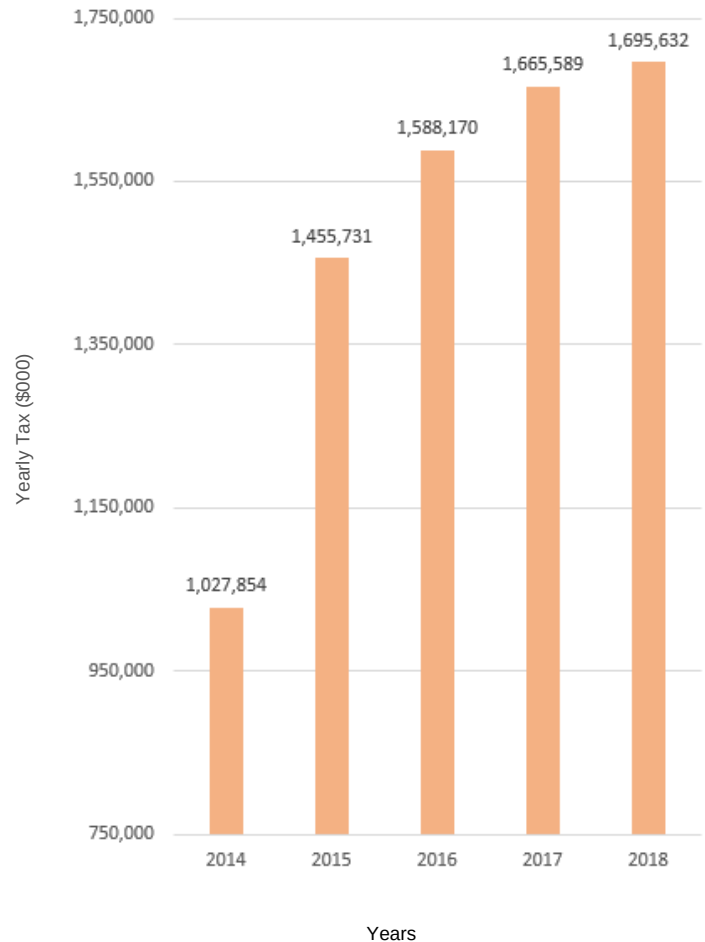
Education

- Elementary schools (Weaver School District/ Merced City School District) **15**
- Middle Schools **6**
- Private Schools **8**

High Schools (MUHSD)

- Golden Valley
- El Capitan
- Merced

Transient Occupancy Tax



Colleges and Universities:



Fresno Pacific University
248 enrolled
(Merced Campus)



Merced College
11,552 enrolled
493 Full/Part time faculty



UC Merced
Undergraduates- 7,881 (92.2%)
Graduates- 663 (7.8%)
1,537 Faculty and Staff

Merced Market Snapshot

Key Facts



87,110

Population



3.1

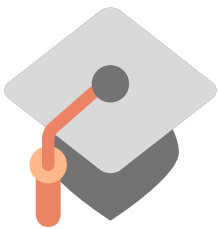
Average Household Size



29.5

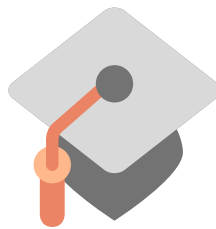
Median Age

Education



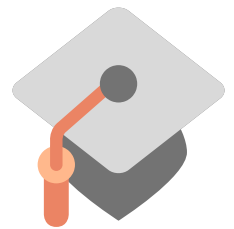
24%

High School Graduate



32%

Some College



19%

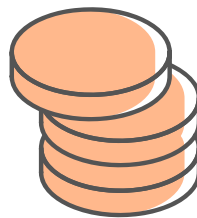
Bachelor's/Grad/Prof Degree

Income



\$59,697

Average Household Income



\$20,399

Per Capita Income



\$42,410

Median Household Income



"Invest in California's Future"

July 2019

The City of Merced

Business Watch



Invest in California's Future

Welcome to the City of Merced
Enjoy the summary of commercial and industrial
projects underway throughout the community.



CIPAF 030
El Capitan Hotel Under Construction - Downtown Merced



El Capitan Hotel

The newly renovated historic hotel will feature 114 guestrooms, an on-site restaurant, and courtyard lounge.

The Tioga

The renovated Tioga will offer a mix of 70, one & two bedroom apartments as well as studios and penthouses. The project includes social work spaces, a fitness center, a private conference & event room and 9,500 sq. ft of ground floor retail.



Mainzer Theatre

The historic theatre is under construction to make a comeback as a performing arts & entertainment venue.

Merced Gateway Center

77-acres slated for a travel oasis, lifestyle, & town center with an entertainment and multi-family component.



Campus Parkway Plaza

8.3-acre site plan includes a 5-story hotel and conference center, gas station, 2 fast food pads, and 2 sit down dining establishments.



Merced Mall Project

Undergoing a total revamp, the Merced Mall is adding entertainment components as well as additional retail stores.

Former Sears Center

Plans call for the former Sears to be divided into 8 tenant spaces with Burlington Coat Factory serving as the anchor.



Former Orchard Supply Hardware Site

The former OSH site is being subdivided into 2 tenant spaces with Planet Fitness serving as the anchor.

O'Keeffe's Safti-First

A 30,651 sq. ft expansion including a cold room to accommodate growing market demands.

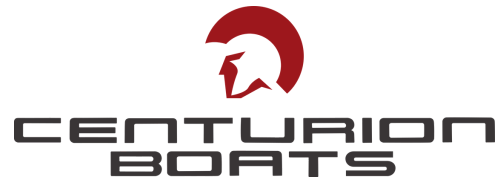


Titan Doors

A 19,000 sq. ft expansion enlarging the door and assembly area.

Centurion Boats Expansion

A 24,234 sq. ft expansion adding research and development to the facility.



PG&E Service Center & Corporation Yard

A new 34,000 sq. ft service and corporation yard which includes an operation building and warehouse

Dutch Brother's Coffee

An 891 sq. ft dual lane coffee kiosk.



Rally's/ Checkers Burgers

Making a comeback to Merced, Rally's plans to locate on the Northwest corner of Childs and Parsons Avenue.

City of Merced
Office of Economic Development
678 W. 18th Street,
Merced CA, 95340

Frank Quintero:
209.385.6826 (D)
209.564.0582 (M)

Maria Mendoza:
209.385.6970 (D)
209.617.5982 (M)